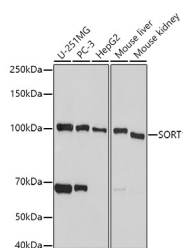


## SORT1 Polyclonal Antibody

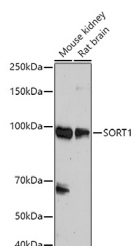
<b>Catalog No.</b>	E-AB-62901	<b>Reactivity</b>	H,M,R
<b>Storage</b>	Store at -20°C. Avoid freeze / thaw cycles.	<b>Host</b>	Rabbit
<b>Applications</b>	WB	<b>Isotype</b>	IgG

**Note:** Centrifuge before opening to ensure complete recovery of vial contents.

### Images



Western blot analysis of extracts of various cell lines using SORT1 Polyclonal Antibody at 1:500 dilution.



Western blot analysis of extracts of various cell lines using SORT1 Polyclonal Antibody at 1:500 dilution.

### Immunogen Information

<b>Immunogen</b>	Recombinant fusion protein of human SORT1
<b>GeneID</b>	6272
<b>Swissprot</b>	Q99523
<b>Synonyms</b>	SORT1,Gp95,LDLCQ6,NT3,NTR3,sortilin

### Product Information

<b>Calculated MW</b>	77kDa/92kDa
<b>Observed MW</b>	100KDa
<b>Buffer</b>	PBS with 0.05% proclin300,50% glycerol,pH7.3.
<b>Purify</b>	Affinity purification
<b>Dilution</b>	WB 1:500-1:2000

### Background

This gene encodes a member of the VPS10-related sortilin family of proteins. The encoded preproprotein is proteolytically processed by furin to generate the mature receptor. This receptor plays a role in the trafficking of different proteins to either the cell surface, or subcellular compartments such as lysosomes and endosomes. Expression levels of this gene may influence the risk of myocardial infarction in human patients. Alternative splicing results in multiple transcript variants.

#### For Research Use Only

Thank you for your recent purchase.  
 If you would like to learn more about antibodies, please visit [www.elabscience.com](http://www.elabscience.com).

**Focus on your research  
 Service for life science**

Applications:WB-Western Blot IHC-Immunohistochemistry IF-Immunofluorescence IP-Immunoprecipitation FC-Flow cytometry ChIP-Chromatin Immunoprecipitation Reactivity: H-Human R-Rat M-Mouse Mk-Monkey Dg-Dog Ch-Chicken Hm-Hamster Rb-Rabbit Sh-Sheep Pg-Pig Z-Zebrafish X-Xenopus C-Cow.