

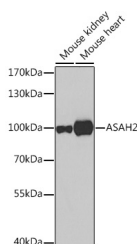
ASAH2 Polyclonal Antibody

Catalog No. E-AB-62491
Storage Store at -20°C. Avoid freeze / thaw cycles.
Applications WB

Reactivity H,M,R
Host Rabbit
Isotype IgG

Note: Centrifuge before opening to ensure complete recovery of vial contents.

Images



Western blot analysis of extracts of various cell lines using ASAH2 Polyclonal Antibody at 1:500 dilution.

Immunogen Information

Immunogen Recombinant protein of human ASAH2
GeneID 56624
Swissprot Q9NR71
Synonyms ASAH2,BCDase,HNAC1,LCDase,N-CDase,NCDase

Product Information

Calculated MW 81kDa/85kDa
Observed MW 100kDa
Buffer PBS with 0.02% sodium azide,50% glycerol,pH7.3.
Purify Affinity purification
Dilution WB 1:1000-1:2000

Background

Ceramidases (EC 3.5.1.23), such as ASAH2, catalyze hydrolysis of the N-acyl linkage of ceramide, a second messenger in a variety of cellular events, to produce sphingosine. Sphingosine exerts both mitogenic and apoptosis-inducing activities, and its phosphorylated form functions as an intra- and intercellular second messenger (see MIM 603730) (Mitsutake et al., 2001 [PubMed 11328816]).[supplied by OMIM, Mar 2008]

For Research Use Only

Thank you for your recent purchase.
If you would like to learn more about antibodies, please visit www.elabscience.com.

Focus on your research Service for life science

Applications:WB-Western Blot IHC-Immunohistochemistry IF-Immunofluorescence IP-Immunoprecipitation FC-Flow cytometry ChIP-Chromatin Immunoprecipitation Reactivity: H-Human R-Rat M-Mouse Mk-Monkey Dg-Dog Ch-Chicken Hm-Hamster Rb-Rabbit Sh-Sheep Pg-Pig Z-Zebrafish X-Xenopus C-Cow.