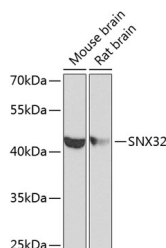


## SNX32 Polyclonal Antibody

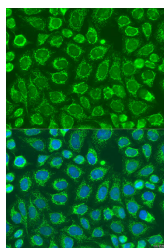
<b>Catalog No.</b>	E-AB-63227	<b>Reactivity</b>	H,M,R
<b>Storage</b>	Store at -20°C. Avoid freeze / thaw cycles.	<b>Host</b>	Rabbit
<b>Applications</b>	WB,IF	<b>Isotype</b>	IgG

**Note:** Centrifuge before opening to ensure complete recovery of vial contents.

### Images



Western blot analysis of extracts of various cell lines using SNX32 Polyclonal Antibody at dilution of 1:1000.



Immunofluorescence analysis of U2OS cells using SNX32 Polyclonal Antibody at dilution of 1:100. Blue: DAPI for nuclear staining.

### Immunogen Information

<b>Immunogen</b>	Recombinant fusion protein of human SNX32 (NP_689973.2).
<b>GeneID</b>	254122
<b>Swissprot</b>	Q86XE0
<b>Synonyms</b>	SNX32,SNX6B

### Product Information

<b>Calculated MW</b>	31kDa/46kDa
<b>Observed MW</b>	46kDa
<b>Buffer</b>	PBS with 0.02% sodium azide, 50% glycerol, pH7.3.
<b>Purify</b>	Affinity purification
<b>Dilution</b>	WB 1:500-1:2000 IF 1:50-1:200

### Background

SNX32 (Sorting Nexin 32) is a Protein Coding gene. Diseases associated with SNX32 include Eastern Equine Encephalitis. Among its related pathways are Endocytosis. Gene Ontology (GO) annotations related to this gene include phosphatidylinositol binding. An important paralog of this gene is SNX6.

#### For Research Use Only

Thank you for your recent purchase.  
 If you would like to learn more about antibodies, please visit [www.elabscience.com](http://www.elabscience.com).

**Focus on your research  
 Service for life science**

Applications:WB-Western Blot IHC-Immunohistochemistry IF-Immunofluorescence IP-Immunoprecipitation FC-Flow cytometry ChIP-Chromatin Immunoprecipitation Reactivity: H-Human R-Rat M-Mouse Mk-Monkey Dg-Dog Ch-Chicken Hm-Hamster Rb-Rabbit Sh-Sheep Pg-Pig Z-Zebrafish X-Xenopus C-Cow.