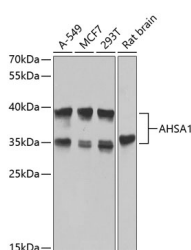


AHSA1 Polyclonal Antibody

Catalog No.	E-AB-63041	Reactivity	H,M,R
Storage	Store at -20°C. Avoid freeze / thaw cycles.	Host	Rabbit
Applications	WB	Isotype	IgG

Note: Centrifuge before opening to ensure complete recovery of vial contents.

Images



Western blot analysis of extracts of various cell lines using AHSA1 Polyclonal Antibody at dilution of 1:1000.

Immunogen Information

Immunogen	Recombinant fusion protein of human AHSA1 (NP_036243.1).
GeneID	10598
Swissprot	O95433
Synonyms	AHSA1,AHA1,C14orf3,hAha1,p38

Product Information

Calculated MW	32kDa/38kDa
Observed MW	35kDa/38kDa
Buffer	PBS with 0.02% sodium azide, 50% glycerol, pH7.3.
Purify	Affinity purification
Dilution	WB 1:500-1:2000

Background

AHSA1 (Activator Of HSP90 ATPase Activity 1) is a Protein Coding gene. Diseases associated with AHSA1 include Stomatitis and Amyotrophic Lateral Sclerosis 1. Among its related pathways are Mechanisms of CFTR activation by S-nitrosoglutathione (normal and CF) and T cell receptor signaling pathway. Gene Ontology (GO) annotations related to this gene include chaperone binding and ATPase activator activity.

For Research Use Only

Thank you for your recent purchase.
 If you would like to learn more about antibodies, please visit www.elabscience.com.

**Focus on your research
 Service for life science**

Applications:WB-Western Blot IHC-Immunohistochemistry IF-Immunofluorescence IP-Immunoprecipitation FC-Flow cytometry ChIP-Chromatin Immunoprecipitation Reactivity: H-Human R-Rat M-Mouse Mk-Monkey Dg-Dog Ch-Chicken Hm-Hamster Rb-Rabbit Sh-Sheep Pg-Pig Z-Zebrafish X-Xenopus C-Cow.