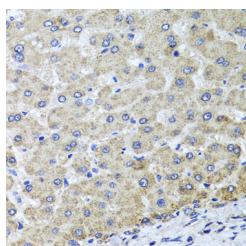


OSGEPL1 Polyclonal Antibody

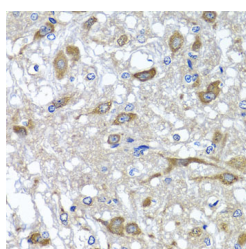
Catalog No.	E-AB-63164	Reactivity	H,M,R
Storage	Store at -20°C. Avoid freeze / thaw cycles.	Host	Rabbit
Applications	IHC,IF	Isotype	IgG

Note: Centrifuge before opening to ensure complete recovery of vial contents.

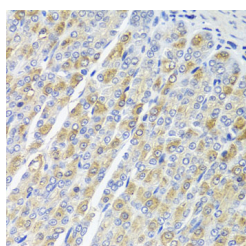
Images



Immunohistochemistry of paraffin-embedded Human liver tissue using OSGEPL1 Polyclonal Antibody at dilution of 1:100 (40x lens).



Immunohistochemistry of paraffin-embedded Rat brain using OSGEPL1 Polyclonal Antibody at dilution of 1:100 (40x lens).



Immunohistochemistry of paraffin-embedded Mouse stomach using OSGEPL1 Polyclonal Antibody at dilution of 1:100 (40x lens).

Immunogen Information

Immunogen	Recombinant fusion protein of human OSGEPL1 (NP_071748.2).
GeneID	64172
Swissprot	Q9H4B0
Synonyms	OSGEPL1,OSGEPL,Qri7

Product Information

Buffer	PBS with 0.02% sodium azide, 50% glycerol, pH7.3.
Purify	Affinity purification
Dilution	IHC 1:50-1:100 IF 1:50-1:100

Background

OSGEPL1 (O-Sialoglycoprotein Endopeptidase Like 1) is a Protein Coding gene. Diseases associated with OSGEPL1 include Galloway-Mowat Syndrome 1 and Mitochondrial Myopathy, Encephalopathy, Lactic Acidosis, And Stroke-Like Episodes. Gene Ontology (GO) annotations related to this gene include metalloendopeptidase activity and transferase activity, transferring acyl groups other than amino-acyl groups. An important paralog of this gene is OSSEP.

For Research Use Only

Thank you for your recent purchase.
 If you would like to learn more about antibodies, please visit www.elabscience.com.

**Focus on your research
 Service for life science**

Applications:WB-Western Blot IHC-Immunohistochemistry IF-Immunofluorescence IP-Immunoprecipitation FC-Flow cytometry ChIP-Chromatin Immunoprecipitation Reactivity: H-Human R-Rat M-Mouse Mk-Monkey Dg-Dog Ch-Chicken Hm-Hamster Rb-Rabbit Sh-Sheep Pg-Pig Z-Zebrafish X-Xenopus C-Cow.