

## CDK16 Polyclonal Antibody

**Catalog No.** E-AB-65571

**Note:** Centrifuge before opening to ensure complete recovery of vial contents.

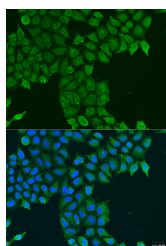
### Description

<b>Reactivity</b>	Human
<b>Immunogen</b>	Recombinant fusion protein of human CDK16
<b>Host</b>	Rabbit
<b>Isotype</b>	IgG
<b>Purification</b>	Affinity purification
<b>Conjugation</b>	Unconjugated
<b>Buffer</b>	PBS with 0.02% sodium azide, 50% glycerol, pH7.3.

### Applications Recommended Dilution

<b>IF</b>	1:50-1:200
-----------	------------

### Data



Immunofluorescence analysis of U2OS cells using CDK16 Polyclonal Antibody at dilution of 1:100. Blue: DAPI for nuclear staining.

**Observed Mw: Refer to figures**  
**Calculated Mw: 55kDa/56kDa/63kDa**

### Preparation & Storage

**Storage** Store at -20°C. Avoid freeze / thaw cycles.

### Background

The protein encoded by this gene belongs to the cdc2/cdkx subfamily of the ser/thr family of protein kinases. It may play a role in signal transduction cascades in terminally differentiated cells; in exocytosis; and in transport of secretory cargo from the endoplasmic reticulum. This gene is thought to escape X inactivation. Alternative splicing results in multiple transcript variants encoding different isoforms.

### For Research Use Only