

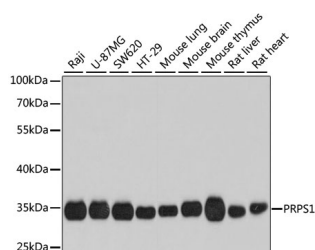
## PRPS1 Polyclonal Antibody

**Catalog No.** E-AB-63873  
**Storage** Store at -20°C. Avoid freeze / thaw cycles.  
**Applications** WB

**Reactivity** H,M,R  
**Host** Rabbit  
**Isotype** IgG

**Note:** Centrifuge before opening to ensure complete recovery of vial contents.

### Images



Western blot analysis of extracts of various cell lines using PRPS1 Polyclonal Antibody at dilution of 1:1000.

### Immunogen Information

**Immunogen** A synthetic peptide of human PRPS1  
**GeneID** 5631  
**Swissprot** P60891  
**Synonyms** PRPS1,ARTS,CMTX5,DFN2,DFNX1,PPRibP,PRS-I,PRSI

### Product Information

**Calculated MW** 27kDa/34kDa  
**Observed MW** 35kDa  
**Buffer** PBS with 0.02% sodium azide, 50% glycerol, pH7.3.  
**Purify** Affinity purification  
**Dilution** WB 1:500-1:2000

### Background

This gene encodes an enzyme that catalyzes the phosphoribosylation of ribose 5-phosphate to 5-phosphoribosyl-1-pyrophosphate, which is necessary for purine metabolism and nucleotide biosynthesis. Defects in this gene are a cause of phosphoribosylpyrophosphate synthetase superactivity, Charcot-Marie-Tooth disease X-linked recessive type 5 and Arts Syndrome. Two transcript variants encoding different isoforms have been found for this gene.

### For Research Use Only

Thank you for your recent purchase.  
If you would like to learn more about antibodies, please visit [www.elabscience.com](http://www.elabscience.com).

**Focus on your research**  
**Service for life science**

Applications: WB-Western Blot IHC-Immunohistochemistry IF-Immunofluorescence IP-Immunoprecipitation FC-Flow cytometry ChIP-Chromatin Immunoprecipitation Reactivity: H-Human R-Rat M-Mouse Mk-Monkey Dg-Dog Ch-Chicken Hm-Hamster Rb-Rabbit Sh-Sheep Pg-Pig Z-Zebrafish X-Xenopus C-Cow.