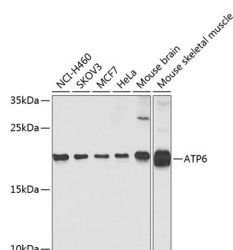


ATP6 Polyclonal Antibody

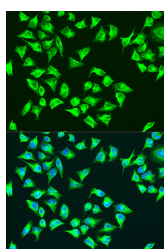
Catalog No.	E-AB-63062	Reactivity	H,M
Storage	Store at -20°C. Avoid freeze / thaw cycles.	Host	Rabbit
Applications	WB,IF	Isotype	IgG

Note: Centrifuge before opening to ensure complete recovery of vial contents.

Images



Western blot analysis of extracts of various cell lines using ATP6 Polyclonal Antibody at dilution of 1:1000.



Immunofluorescence analysis of U2OS cells using ATP6 Polyclonal Antibody at dilution of 1:100. Blue: DAPI for nuclear staining.

Immunogen Information

Immunogen	A synthetic peptide of mouse ATP6 (NP_904333.1).
GeneID	17705
Swissprot	P00846
Synonyms	MT-ATP6,ATPase6,MTATP6,ATP6

Product Information

Calculated MW	25kDa
Observed MW	20kDa
Buffer	PBS with 0.02% sodium azide, 50% glycerol, pH7.3.
Purify	Affinity purification
Dilution	WB 1:500-1:2000 IF 1:50-1:200

Background

MT-ATP6 (Mitochondrially Encoded ATP Synthase Membrane Subunit 6) is a Protein Coding gene. Diseases associated with MT-ATP6 include Neuropathy, Ataxia, And Retinitis Pigmentosa and Myopathy, Lactic Acidosis, And Sideroblastic Anemia 3. Among its related pathways are Respiratory electron transport, ATP synthesis by chemiosmotic coupling, and heat production by uncoupling proteins. and Parkinson disease. Gene Ontology (GO) annotations related to this gene include ATPase activity and proton transmembrane transporter activity.

For Research Use Only

Thank you for your recent purchase.
 If you would like to learn more about antibodies, please visit www.elabscience.com.

**Focus on your research
 Service for life science**

Applications:WB-Western Blot IHC-Immunohistochemistry IF-Immunofluorescence IP-Immunoprecipitation FC-Flow cytometry ChIP-Chromatin Immunoprecipitation Reactivity: H-Human R-Rat M-Mouse Mk-Monkey Dg-Dog Ch-Chicken Hm-Hamster Rb-Rabbit Sh-Sheep Pg-Pig Z-Zebrafish X-Xenopus C-Cow.