

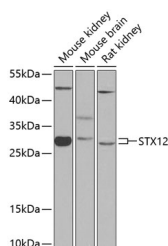
## STX12 Polyclonal Antibody

**Catalog No.** E-AB-63078  
**Storage** Store at -20°C. Avoid freeze / thaw cycles.  
**Applications** WB

**Reactivity** H,M,R  
**Host** Rabbit  
**Isotype** IgG

**Note:** Centrifuge before opening to ensure complete recovery of vial contents.

### Images



Western blot analysis of extracts of various cell lines using STX12 Polyclonal Antibody at 1:1000 dilution.

### Immunogen Information

**Immunogen** Recombinant fusion protein of human STX12  
**GeneID** 23673  
**Swissprot** Q86Y82  
**Synonyms** STX12,STX13,STX14

### Product Information

**Calculated MW** 31kDa  
**Observed MW** 31kDa  
**Buffer** PBS with 0.01% thiomersal,50% glycerol,pH7.3.  
**Purify** Affinity purification  
**Dilution** WB 1:500-1:2000

### Background

SNARE that acts to regulate protein transport between late endosomes and the trans-Golgi network. The SNARE complex containing STX6, STX12, VAMP4 and VTI1A mediates vesicle fusion (in vitro (By similarity. Through complex formation with GRIP1, GRIA2 and NSG1 controls the intracellular fate of AMPAR and the endosomal sorting of the GRIA2 subunit toward recycling and membrane targeting (By similarity).

### For Research Use Only

Thank you for your recent purchase.  
If you would like to learn more about antibodies, please visit [www.elabscience.com](http://www.elabscience.com).

### Focus on your research Service for life science

Applications:WB-Western Blot IHC-Immunohistochemistry IF-Immunofluorescence IP-Immunoprecipitation FC-Flow cytometry ChIP-Chromatin Immunoprecipitation Reactivity: H-Human R-Rat M-Mouse Mk-Monkey Dg-Dog Ch-Chicken Hm-Hamster Rb-Rabbit Sh-Sheep Pg-Pig Z-Zebrafish X-Xenopus C-Cow.