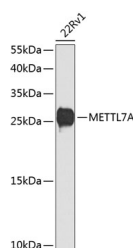


METTL7A Polyclonal Antibody

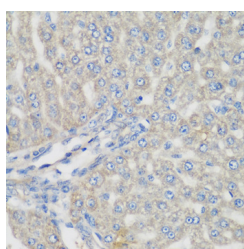
Catalog No.	E-AB-62404	Reactivity	H,M,R
Storage	Store at -20°C. Avoid freeze / thaw cycles.	Host	Rabbit
Applications	WB,IHC	Isotype	IgG

Note: Centrifuge before opening to ensure complete recovery of vial contents.

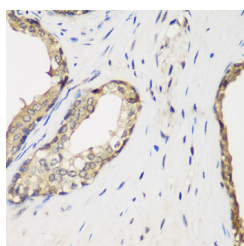
Images



Western blot analysis of extracts of 22Rv1 cells using METTL7A Polyclonal Antibody at dilution of 1:1000.



Immunohistochemistry of paraffin-embedded Rat liver using METTL7A Polyclonal Antibody at dilution of 1:200 (40x lens).



Immunohistochemistry of paraffin-embedded Human prostate using METTL7A Polyclonal Antibody at dilution of 1:200 (40x lens).

Immunogen Information

Immunogen	Recombinant fusion protein of human METTL7A (NP_054752.3).
GeneID	25840
Swissprot	Q9H8H3
Synonyms	METTL7A,AAM-B

Product Information

Calculated MW	28kDa
Observed MW	28kDa
Buffer	PBS with 0.02% sodium azide, 50% glycerol, pH7.3.
Purify	Affinity purification
Dilution	WB 1:500-1:2000 IHC 1:50-1:200

Background

METTL7A (methyltransferase like 7A), also known as AAM-B, is a 244 amino acid protein that is thought to function as a methyltransferase and is encoded by a gene which maps to chromosome 12. Encoding over 1,100 genes, chromosome 12 comprises nearly 4.5% of the human genome and is associated with a number of skeletal deformities, including hypochondrogenesis, achondrogenesis and Kniest dysplasia. Chromosome 12 is also home to both a homeobox gene cluster which encodes crucial transcription factors for morphogenesis, and a natural killer complex gene cluster encoding C-type lectin proteins which mediate the NK cell response to MHC I interaction. Additionally, Trisomy 12p (three copies of the p arm of chromosome 12) leads to facial developmental defects, seizure disorders and a host of other symptoms varying in severity depending on the extent of mosaicism.

For Research Use Only

Thank you for your recent purchase.
 If you would like to learn more about antibodies, please visit www.elabscience.com.

Focus on your research
Service for life science

Applications:WB-Western Blot IHC-Immunohistochemistry IF-Immunofluorescence IP-Immunoprecipitation FC-Flow cytometry ChIP-Chromatin Immunoprecipitation Reactivity: H-Human R-Rat M-Mouse Mk-Monkey Dg-Dog Ch-Chicken Hm-Hamster Rb-Rabbit Sh-Sheep Pg-Pig Z-Zebrafish X-Xenopus C-Cow.