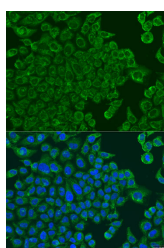


## ALOXE3 Polyclonal Antibody

<b>Catalog No.</b>	E-AB-63157	<b>Reactivity</b>	H,M,R
<b>Storage</b>	Store at -20°C. Avoid freeze / thaw cycles.	<b>Host</b>	Rabbit
<b>Applications</b>	IF	<b>Isotype</b>	IgG

**Note:** Centrifuge before opening to ensure complete recovery of vial contents.

### Images



Immunofluorescence analysis of U2OS cells using ALOXE3 Polyclonal Antibody at dilution of 1:100. Blue: DAPI for nuclear staining.

### Immunogen Information

<b>Immunogen</b>	Recombinant fusion protein of human ALOXE3 (NP_067641.2).
<b>GeneID</b>	59344
<b>Swissprot</b>	Q9BYJ1
<b>Synonyms</b>	ALOXE3,ARCI3,E-LOX,eLOX-3,eLOX3

### Product Information

<b>Buffer</b>	PBS with 0.02% sodium azide, 50% glycerol, pH7.3.
<b>Purify</b>	Affinity purification
<b>Dilution</b>	IF 1:50-1:200

### Background

This gene is a member of the lipoxygenase family, which are catabolized by arachidonic acid-derived compounds. The encoded enzyme is a hydroperoxide isomerase that synthesizes a unique type of epoxy alcohol (8R-hydroxy-11R,12R-epoxyeicosa-5Z,9E,14Z-trienoic acid) from 12R-hydroperoxyeicosatetraenoic acid (12R-HPETE). This epoxy alcohol can activate the the nuclear receptor peroxisome proliferator-activated receptor alpha (PPARalpha), which is implicated in epidermal differentiation. Loss of function of the enzyme encoded by this gene results in ichthyosis, implicating the function of this gene in the differentiation of human skin. This gene is part of a cluster of lipoxygenase genes on 17p13.1. Mutations in this gene result in nonbullous congenital ichthyosiform erythroderma (NCIE). Multiple transcript variants encoding different isoforms have been found for this gene.

#### For Research Use Only

Thank you for your recent purchase.  
 If you would like to learn more about antibodies, please visit [www.elabscience.com](http://www.elabscience.com).

**Focus on your research  
 Service for life science**

Applications:WB-Western Blot IHC-Immunohistochemistry IF-Immunofluorescence IP-Immunoprecipitation FC-Flow cytometry ChIP-Chromatin Immunoprecipitation Reactivity: H-Human R-Rat M-Mouse Mk-Monkey Dg-Dog Ch-Chicken Hm-Hamster Rb-Rabbit Sh-Sheep Pg-Pig Z-Zebrafish X-Xenopus C-Cow.