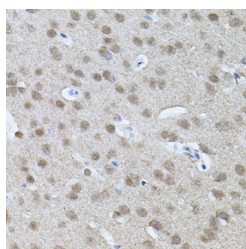


RNF166 Polyclonal Antibody

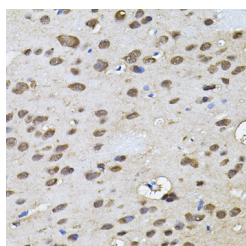
| | | | |
|---------------------|---------------------------------------------|-------------------|--------|
| Catalog No. | E-AB-63875 | Reactivity | H,M,R |
| Storage | Store at -20°C. Avoid freeze / thaw cycles. | Host | Rabbit |
| Applications | IHC | Isotype | IgG |

Note: Centrifuge before opening to ensure complete recovery of vial contents.

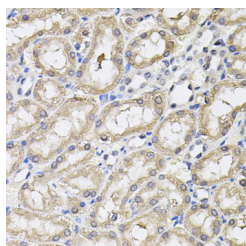
Images



Immunohistochemistry of paraffin-embedded Mouse brain using RNF166 Polyclonal Antibody



Immunohistochemistry of paraffin-embedded Rat brain using RNF166 Polyclonal Antibody



Immunohistochemistry of paraffin-embedded Rat kidney using RNF166 Polyclonal Antibody

Immunogen Information

| | |
|------------------|----------------------------------------------------|
| Immunogen | A synthetic peptide of human RNF166 (NP_849163.1). |
| GeneID | 115992 |
| Swissprot | Q96A37 |
| Synonyms | RNF166 |

Product Information

| | |
|-----------------|---------------------------------------------------|
| Buffer | PBS with 0.02% sodium azide, 50% glycerol, pH7.3. |
| Purify | Affinity purification |
| Dilution | IHC 1:50-1:200 |

Background

RNF166 (Ring Finger Protein 166) is a Protein Coding gene. Diseases associated with RNF166 include Generalized Epilepsy With Febrile Seizures Plus, Type 9 and Myopathy, Congenital, Compton-North. An important paralog of this gene is RNF114.

For Research Use Only

Thank you for your recent purchase.
 If you would like to learn more about antibodies, please visit www.elabscience.com.

**Focus on your research
 Service for life science**

Applications:WB-Western Blot IHC-Immunohistochemistry IF-Immunofluorescence IP-Immunoprecipitation FC-Flow cytometry ChIP-Chromatin Immunoprecipitation Reactivity: H-Human R-Rat M-Mouse Mk-Monkey Dg-Dog Ch-Chicken Hm-Hamster Rb-Rabbit Sh-Sheep Pg-Pig Z-Zebrafish X-Xenopus C-Cow.