

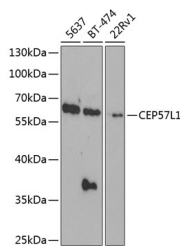
CEP57L1 Polyclonal Antibody

Catalog No. E-AB-62593
Storage Store at -20°C. Avoid freeze / thaw cycles.
Applications WB

Reactivity H
Host Rabbit
Isotype IgG

Note: Centrifuge before opening to ensure complete recovery of vial contents.

Images



Western blot analysis of extracts of various cell lines using CEP57L1 Polyclonal Antibody at 1:1000 dilution.

Immunogen Information

Immunogen Recombinant fusion protein of human CEP57L1
GeneID 285753
Swissprot Q8IYX8
Synonyms CEP57L1,C6orf182,bA487F23.2,cep57R

Product Information

Calculated MW 45kDa/53kDa
Observed MW 60kDa
Buffer PBS with 0.02% sodium azide,50% glycerol,pH7.3.
Purify Affinity purification
Dilution WB 1:500-1:2000

Background

Centrosomal protein which may be required for microtubule attachment to centrosomes.

For Research Use Only

Thank you for your recent purchase.
If you would like to learn more about antibodies, please visit www.elabscience.com.

Focus on your research Service for life science

Applications:WB-Western Blot IHC-Immunohistochemistry IF-Immunofluorescence IP-Immunoprecipitation FC-Flow cytometry ChIP-Chromatin Immunoprecipitation Reactivity: H-Human R-Rat M-Mouse Mk-Monkey Dg-Dog Ch-Chicken Hm-Hamster Rb-Rabbit Sh-Sheep Pg-Pig Z-Zebrafish X-Xenopus C-Cow.