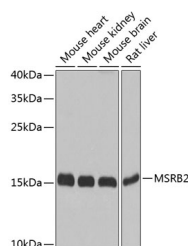


MSRB2 Polyclonal Antibody

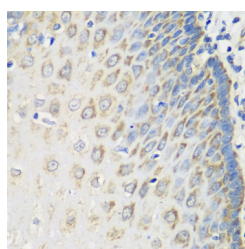
Catalog No.	E-AB-63065	Reactivity	H,M,R
Storage	Store at -20°C. Avoid freeze / thaw cycles.	Host	Rabbit
Applications	WB,IHC	Isotype	IgG

Note: Centrifuge before opening to ensure complete recovery of vial contents.

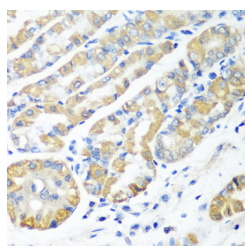
Images



Western blot analysis of extracts of various cell lines using MSRB2 Polyclonal Antibody at dilution of 1:1000.



Immunohistochemistry of paraffin-embedded Human esophagus using MSRB2 Polyclonal Antibody at dilution of 1:100 (40x lens).



Immunohistochemistry of paraffin-embedded Human stomach using MSRB2 Polyclonal Antibody at dilution of 1:100 (40x lens).

Immunogen Information

Immunogen	Recombinant fusion protein of human MSRB2 (NP_036360.3).
GeneID	22921
Swissprot	Q9Y3D2
Synonyms	MSRB2,CBS-1,CBS1,CGI-131,MSRB,PILB

Product Information

Calculated MW	19kDa
Observed MW	20kDa
Buffer	PBS with 0.02% sodium azide, 50% glycerol, pH7.3.
Purify	Affinity purification
Dilution	WB 1:500-1:2000 IHC 1:50-1:100

Background

MSRB2 (Methionine Sulfoxide Reductase B2) is a Protein Coding gene. Diseases associated with MSRB2 include Myotonia Congenita and Coffin-Siris Syndrome 1. Among its related pathways are Protein repair and Metabolism of proteins. Gene Ontology (GO) annotations related to this gene include DNA-binding transcription factor activity and peptide-methionine (R)-S-oxide reductase activity. An important paralog of this gene is MSRB3.

For Research Use Only

Thank you for your recent purchase.
 If you would like to learn more about antibodies, please visit www.elabscience.com.

**Focus on your research
 Service for life science**

Applications:WB-Western Blot IHC-Immunohistochemistry IF-Immunofluorescence IP-Immunoprecipitation FC-Flow cytometry ChIP-Chromatin Immunoprecipitation Reactivity: H-Human R-Rat M-Mouse Mk-Monkey Dg-Dog Ch-Chicken Hm-Hamster Rb-Rabbit Sh-Sheep Pg-Pig Z-Zebrafish X-Xenopus C-Cow.