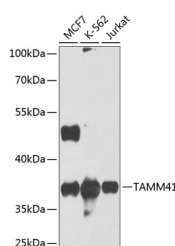


TAMM41 Polyclonal Antibody

Catalog No.	E-AB-62572	Reactivity	H,M
Storage	Store at -20°C. Avoid freeze / thaw cycles.	Host	Rabbit
Applications	WB	Isotype	IgG

Note: Centrifuge before opening to ensure complete recovery of vial contents.

Images



Western blot analysis of extracts of various cell lines using TAMM41 Polyclonal Antibody at 1:1000 dilution.

Immunogen Information

Immunogen	Recombinant fusion protein of human TAMM41
GeneID	132001
Swissprot	Q96BW9
Synonyms	TAMM41,C3orf31, RAM41, TAM41

Product Information

Calculated MW	35kDa/38kDa/51kDa
Observed MW	38kDa
Buffer	PBS with 0.02% sodium azide,50% glycerol,pH7.3.
Purify	Affinity purification
Dilution	WB 1:500-1:2000

Background

Catalyzes the conversion of phosphatidic acid (PA to CDP-diacylglycerol (CDP-DAG, an essential intermediate in the synthesis of phosphatidylglycerol, cardiolipin and phosphatidylinositol.

For Research Use Only

Thank you for your recent purchase.
 If you would like to learn more about antibodies, please visit www.elabscience.com.

**Focus on your research
 Service for life science**

Applications:WB-Western Blot IHC-Immunohistochemistry IF-Immunofluorescence IP-Immunoprecipitation FC-Flow cytometry ChIP-Chromatin Immunoprecipitation Reactivity: H-Human R-Rat M-Mouse Mk-Monkey Dg-Dog Ch-Chicken Hm-Hamster Rb-Rabbit Sh-Sheep Pg-Pig Z-Zebrafish X-Xenopus C-Cow.