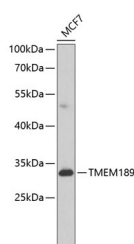


TMEM189 Polyclonal Antibody

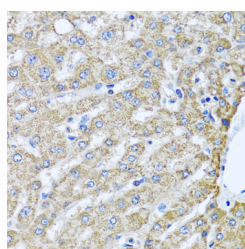
Catalog No.	E-AB-62600	Reactivity	H
Storage	Store at -20°C. Avoid freeze / thaw cycles.	Host	Rabbit
Applications	WB,IHC	Isotype	IgG

Note: Centrifuge before opening to ensure complete recovery of vial contents.

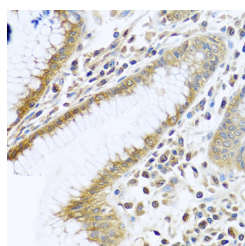
Images



Western blot analysis of extracts of MCF-7 cells using TMEM189 Polyclonal Antibody at dilution of 1:1000.



Immunohistochemistry of paraffin-embedded Human liver using TMEM189 Polyclonal Antibody at dilution of 1:100 (40x lens).



Immunohistochemistry of paraffin-embedded Human stomach using TMEM189 Polyclonal Antibody at dilution of 1:100 (40x lens).

Immunogen Information

Immunogen	A synthetic peptide of human TMEM189 (NP_954580.1).
GeneID	387521
Swissprot	A5PLL7
Synonyms	TMEM189,KUA

Product Information

Calculated MW	30kDa/31kDa
Observed MW	31kDa
Buffer	PBS with 0.02% sodium azide, 50% glycerol, pH7.3.
Purify	Affinity purification
Dilution	WB 1:500-1:2000 IHC 1:50-1:100

Background

Co-transcription of this gene and the neighboring downstream gene (ubiquitin-conjugating enzyme E2 variant 1) generates a rare read-through transcript, which encodes a fusion protein comprised of sequence sharing identity with each individual gene product. The protein encoded by this individual gene lacks a UEV1 domain but includes three transmembrane regions. Alternative splicing results in multiple transcript variants.

For Research Use Only

Thank you for your recent purchase.
 If you would like to learn more about antibodies, please visit www.elabscience.com.

Focus on your research
Service for life science

Applications:WB-Western Blot IHC-Immunohistochemistry IF-Immunofluorescence IP-Immunoprecipitation FC-Flow cytometry ChIP-Chromatin Immunoprecipitation Reactivity: H-Human R-Rat M-Mouse Mk-Monkey Dg-Dog Ch-Chicken Hm-Hamster Rb-Rabbit Sh-Sheep Pg-Pig Z-Zebrafish X-Xenopus C-Cow.