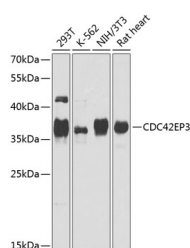


CDC42EP3 Polyclonal Antibody

Catalog No.	E-AB-62353	Reactivity	H,M,R
Storage	Store at -20°C. Avoid freeze / thaw cycles.	Host	Rabbit
Applications	WB	Isotype	IgG

Note: Centrifuge before opening to ensure complete recovery of vial contents.

Images



Western blot analysis of extracts of various cell lines using CDC42EP3 Polyclonal Antibody at dilution of 1:1000.

Immunogen Information

Immunogen	Recombinant fusion protein of human CDC42EP3 (NP_006440.2).
GeneID	10602
Swissprot	Q9UKI2
Synonyms	CDC42EP3,BORG2,CEP3,UB1

Product Information

Calculated MW	27kDa
Observed MW	37kDa
Buffer	PBS with 0.02% sodium azide, 50% glycerol, pH7.3.
Purify	Affinity purification
Dilution	WB 1:500-1:2000

Background

This gene encodes a member of a small family of guanosine triphosphate (GTP) metabolizing proteins that contain a CRIB (Cdc42, Rac interactive binding) domain. Members of this family of proteins act as effectors of CDC42 function. The encoded protein is involved in actin cytoskeleton reorganization during cell shape changes, including pseudopodia formation. A pseudogene of this gene is found on chromosome 19. Alternative splicing results in multiple transcript variants.

For Research Use Only

Thank you for your recent purchase.
 If you would like to learn more about antibodies, please visit www.elabscience.com.

**Focus on your research
 Service for life science**

Applications:WB-Western Blot IHC-Immunohistochemistry IF-Immunofluorescence IP-Immunoprecipitation FC-Flow cytometry ChIP-Chromatin Immunoprecipitation Reactivity: H-Human R-Rat M-Mouse Mk-Monkey Dg-Dog Ch-Chicken Hm-Hamster Rb-Rabbit Sh-Sheep Pg-Pig Z-Zebrafish X-Xenopus C-Cow.