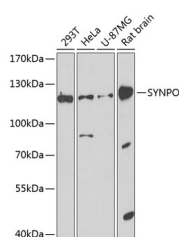


## SYNPO Polyclonal Antibody

<b>Catalog No.</b>	E-AB-63061	<b>Reactivity</b>	H,M,R
<b>Storage</b>	Store at -20°C. Avoid freeze / thaw cycles.	<b>Host</b>	Rabbit
<b>Applications</b>	WB	<b>Isotype</b>	IgG

**Note:** Centrifuge before opening to ensure complete recovery of vial contents.

### Images



Western blot analysis of extracts of various cell lines using SYNPO Polyclonal Antibody at 1:1000 dilution.

### Immunogen Information

<b>Immunogen</b>	Recombinant fusion protein of human SYNPO
<b>GeneID</b>	11346
<b>Swissprot</b>	Q8N3V7
<b>Synonyms</b>	SYNPO

### Product Information

<b>Calculated MW</b>	73kDa/96kDa/99kDa
<b>Observed MW</b>	125kDa
<b>Buffer</b>	PBS with 0.02% sodium azide,50% glycerol,pH7.3.
<b>Purify</b>	Affinity purification
<b>Dilution</b>	WB 1:500-1:2000

### Background

Synaptopodin is an actin-associated protein that may play a role in actin-based cell shape and motility. The name synaptopodin derives from the protein's associations with postsynaptic densities and dendritic spines and with renal podocytes (Mundel et al., 1997 [PubMed 9314539]).[supplied by OMIM, Mar 2008]

#### For Research Use Only

Thank you for your recent purchase.

If you would like to learn more about antibodies, please visit [www.elabscience.com](http://www.elabscience.com).

**Focus on your research  
 Service for life science**

Applications:WB-Western Blot IHC-Immunohistochemistry IF-Immunofluorescence IP-Immunoprecipitation FC-Flow cytometry ChIP-Chromatin Immunoprecipitation Reactivity: H-Human R-Rat M-Mouse Mk-Monkey Dg-Dog Ch-Chicken Hm-Hamster Rb-Rabbit Sh-Sheep Pg-Pig Z-Zebrafish X-Xenopus C-Cow.