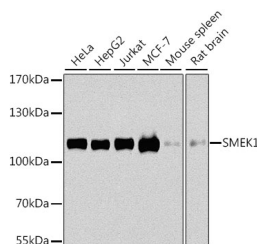


SMEK1 Polyclonal Antibody

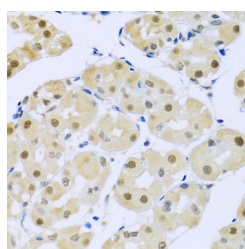
Catalog No.	E-AB-62484	Reactivity	H,M,R
Storage	Store at -20°C. Avoid freeze / thaw cycles.	Host	Rabbit
Applications	WB,IHC	Isotype	IgG

Note: Centrifuge before opening to ensure complete recovery of vial contents.

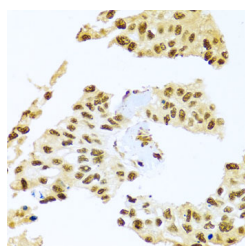
Images



Western blot analysis of extracts of various cell lines using SMEK1 Polyclonal Antibody at dilution of 1:1000.



Immunohistochemistry of paraffin-embedded Human stomach using SMEK1 Polyclonal Antibody at dilution of 1:100 (40x lens).



Immunohistochemistry of paraffin-embedded Human lung cancer using SMEK1 Polyclonal Antibody at dilution of 1:100 (40x lens).

Immunogen Information

Immunogen Recombinant fusion protein of human SMEK1 (NP_001271210.1).

GeneID 55671

Swissprot Q6IN85

Synonyms PPP4R3A,FLFL1,KIAA2010,MSTP033,PP4R3,PP4R3A,SMEK1,smk-1,smk1

Product Information

Calculated MW 62kDa/67kDa/93kDa/95kDa

Observed MW 110kDa

Buffer PBS with 0.02% sodium azide, 50% glycerol, pH7.3.

Purify Affinity purification

Dilution WB 1:500-1:2000 IHC 1:50-1:100

Background

PPP4R3A (Protein Phosphatase 4 Regulatory Subunit 3A) is a Protein Coding gene. Among its related pathways are Glucagon signaling pathway and Integrated Breast Cancer Pathway. An important paralog of this gene is PPP4R3B.

For Research Use Only

Thank you for your recent purchase.

If you would like to learn more about antibodies, please visit www.elabscience.com.

**Focus on your research
 Service for life science**

Applications:WB-Western Blot IHC-Immunohistochemistry IF-Immunofluorescence IP-Immunoprecipitation FC-Flow cytometry ChIP-Chromatin Immunoprecipitation Reactivity: H-Human R-Rat M-Mouse Mk-Monkey Dg-Dog Ch-Chicken Hm-Hamster Rb-Rabbit Sh-Sheep Pg-Pig Z-Zebrafish X-Xenopus C-Cow.