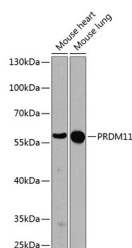


PRDM11 Polyclonal Antibody

Catalog No.	E-AB-62497	Reactivity	M
Storage	Store at -20°C. Avoid freeze / thaw cycles.	Host	Rabbit
Applications	WB	Isotype	IgG

Note: Centrifuge before opening to ensure complete recovery of vial contents.

Images



Western blot analysis of extracts of various cell lines using PRDM11 Polyclonal Antibody at dilution of 1:1000.

Immunogen Information

Immunogen	Recombinant fusion protein of human PRDM11 (NP_001243625.1).
GeneID	56981
Swissprot	Q9NQV5
Synonyms	PRDM11,PFM8

Product Information

Calculated MW	53kDa/57kDa
Observed MW	58kDa
Buffer	PBS with 0.02% sodium azide, 50% glycerol, pH7.3.
Purify	Affinity purification
Dilution	WB 1:500-1:2000

Background

PRDM11 (PR/SET Domain 11) is a Protein Coding gene. Diseases associated with PRDM11 include Hermansky-Pudlak Syndrome 1. Gene Ontology (GO) annotations related to this gene include nucleic acid binding and methyltransferase activity. An important paralog of this gene is PRDM7.

For Research Use Only

Thank you for your recent purchase.
 If you would like to learn more about antibodies, please visit www.elabscience.com.

**Focus on your research
 Service for life science**

Applications:WB-Western Blot IHC-Immunohistochemistry IF-Immunofluorescence IP-Immunoprecipitation FC-Flow cytometry ChIP-Chromatin Immunoprecipitation Reactivity: H-Human R-Rat M-Mouse Mk-Monkey Dg-Dog Ch-Chicken Hm-Hamster Rb-Rabbit Sh-Sheep Pg-Pig Z-Zebrafish X-Xenopus C-Cow.