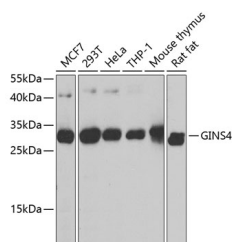


GINS4 Polyclonal Antibody

Catalog No.	E-AB-63188	Reactivity	H,M,R
Storage	Store at -20°C. Avoid freeze / thaw cycles.	Host	Rabbit
Applications	WB	Isotype	IgG

Note: Centrifuge before opening to ensure complete recovery of vial contents.

Images



Western blot analysis of extracts of various cell lines using GINS4 Polyclonal Antibody at dilution of 1:1000.

Immunogen Information

Immunogen	Recombinant fusion protein of human GINS4 (NP_115712.1).
GeneID	84296
Swissprot	Q9BRT9
Synonyms	GINS4,SLD5

Product Information

Calculated MW	11kDa/26kDa
Observed MW	26kDa
Buffer	PBS with 0.02% sodium azide, 50% glycerol, pH7.3.
Purify	Affinity purification
Dilution	WB 1:500-1:2000

Background

The yeast heterotetrameric GINS complex is made up of Sld5, Psf1 (GIN1; MIM 610608), Psf2 (GIN2; MIM 610609), and Psf3 (GIN3; MIM 610610). The formation of the GINS complex is essential for the initiation of DNA replication in yeast and Xenopus egg extracts (Ueno et al., 2005 [PubMed 16287864]). See GIN1 for additional information about the GINS complex.

For Research Use Only

Thank you for your recent purchase.
 If you would like to learn more about antibodies, please visit www.elabscience.com.

**Focus on your research
 Service for life science**

Applications: WB-Western Blot IHC-Immunohistochemistry IF-Immunofluorescence IP-Immunoprecipitation FC-Flow cytometry ChIP-Chromatin Immunoprecipitation Reactivity: H-Human R-Rat M-Mouse Mk-Monkey Dg-Dog Ch-Chicken Hm-Hamster Rb-Rabbit Sh-Sheep Pg-Pig Z-Zebrafish X-Xenopus C-Cow.