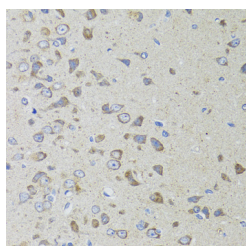


AIFM3 Polyclonal Antibody

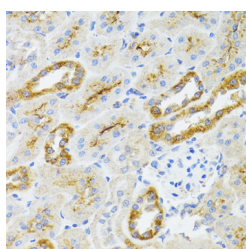
Catalog No.	E-AB-63886	Reactivity	H,M,R
Storage	Store at -20°C. Avoid freeze / thaw cycles.	Host	Rabbit
Applications	IHC	Isotype	IgG

Note: Centrifuge before opening to ensure complete recovery of vial contents.

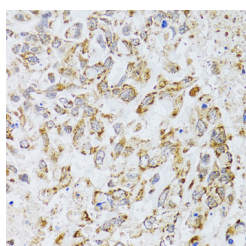
Images



Immunohistochemistry of paraffin-embedded Rat brain using AIFM3 Polyclonal Antibody at dilution of 1:100 (40x lens).



Immunohistochemistry of paraffin-embedded Rat kidney using AIFM3 Polyclonal Antibody at dilution of 1:100 (40x lens).



Immunohistochemistry of paraffin-embedded Human lung cancer using AIFM3 Polyclonal Antibody at dilution of 1:100 (40x lens).

Immunogen Information

Immunogen	Recombinant fusion protein of human AIFM3 (NP_001018070.1).
GeneID	150209
Swissprot	Q96NN9
Synonyms	AIFM3,AIFL

Product Information

Buffer	PBS with 0.02% sodium azide, 50% glycerol, pH7.3.
Purify	Affinity purification
Dilution	IHC 1:50-1:200

Background

AIFM3 (Apoptosis Inducing Factor Mitochondria Associated 3) is a Protein Coding gene. Diseases associated with AIFM3 include Chromosome 6Q24-Q25 Deletion Syndrome and Febrile Seizures, Familial, 7. Gene Ontology (GO) annotations related to this gene include oxidoreductase activity and 2 iron, 2 sulfur cluster binding. An important paralog of this gene is DLD.

For Research Use Only

Thank you for your recent purchase.
 If you would like to learn more about antibodies, please visit www.elabscience.com.

**Focus on your research
 Service for life science**

Applications:WB-Western Blot IHC-Immunohistochemistry IF-Immunofluorescence IP-Immunoprecipitation FC-Flow cytometry ChIP-Chromatin Immunoprecipitation Reactivity: H-Human R-Rat M-Mouse Mk-Monkey Dg-Dog Ch-Chicken Hm-Hamster Rb-Rabbit Sh-Sheep Pg-Pig Z-Zebrafish X-Xenopus C-Cow.