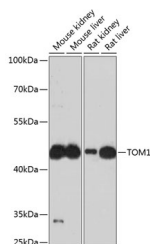


TOM1 Polyclonal Antibody

Catalog No.	E-AB-65619	Reactivity	H,M,R
Storage	Store at -20°C. Avoid freeze / thaw cycles.	Host	Rabbit
Applications	WB,IHC	Isotype	IgG

Note: Centrifuge before opening to ensure complete recovery of vial contents.

Images



Western blot analysis of extracts of various cell lines using TOM1 Polyclonal Antibody at 1:3000 dilution.

Immunogen Information

Immunogen	Recombinant fusion protein of human TOM1
GeneID	10043
Swissprot	O60784
Synonyms	TOM1

Product Information

Calculated MW	48kDa/50kDa/53kDa
Observed MW	54kDa
Buffer	PBS with 0.01% thiomersal,50% glycerol,pH7.3.
Purify	Affinity purification
Dilution	WB 1:500-1:2000,IHC 1:50-1:200

Background

This gene was identified as a target of the v-myb oncogene. The encoded protein shares its N-terminal domain in common with proteins associated with vesicular trafficking at the endosome. It is recruited to the endosomes by its interaction with endofin. Several alternatively spliced transcript variants encoding different isoforms have been found for this gene.

For Research Use Only

Thank you for your recent purchase.

If you would like to learn more about antibodies, please visit www.elabscience.com.

**Focus on your research
 Service for life science**

Applications:WB-Western Blot IHC-Immunohistochemistry IF-Immunofluorescence IP-Immunoprecipitation FC-Flow cytometry ChIP-Chromatin Immunoprecipitation Reactivity: H-Human R-Rat M-Mouse Mk-Monkey Dg-Dog Ch-Chicken Hm-Hamster Rb-Rabbit Sh-Sheep Pg-Pig Z-Zebrafish X-Xenopus C-Cow.