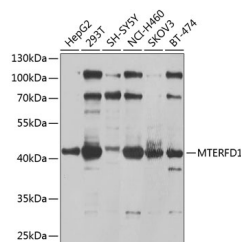


## MTERFD1 Polyclonal Antibody

<b>Catalog No.</b>	E-AB-62434	<b>Reactivity</b>	H,M
<b>Storage</b>	Store at -20°C. Avoid freeze / thaw cycles.	<b>Host</b>	Rabbit
<b>Applications</b>	WB,IF	<b>Isotype</b>	IgG

**Note:** Centrifuge before opening to ensure complete recovery of vial contents.

### Images



Western blot analysis of extracts of various cell lines using MTERFD1 Polyclonal Antibody at 1:1000 dilution.

### Immunogen Information

<b>Immunogen</b>	Recombinant fusion protein of human MTERFD1
<b>GeneID</b>	51001
<b>Swissprot</b>	Q96E29
<b>Synonyms</b>	MTERF3, CGI-12, MTERFD1

### Product Information

<b>Calculated MW</b>	34kDa/37kDa/47kDa
<b>Observed MW</b>	48kDa
<b>Buffer</b>	PBS with 0.02% sodium azide, 50% glycerol, pH7.3.
<b>Purify</b>	Affinity purification
<b>Dilution</b>	WB 1:500-1:2000, IF 1:50-1:200

### Background

Binds promoter DNA and regulates initiation of transcription. Required for normal mitochondrial transcription and translation, and for normal assembly of mitochondrial respiratory complexes. Required for normal mitochondrial function (By similarity). Maintains 16S rRNA levels and functions in mitochondrial ribosome assembly by regulating the biogenesis of the 39S ribosomal subunit (By similarity).

### For Research Use Only

Thank you for your recent purchase.  
If you would like to learn more about antibodies, please visit [www.elabscience.com](http://www.elabscience.com).

### Focus on your research Service for life science

Applications: WB-Western Blot IHC-Immunohistochemistry IF-Immunofluorescence IP-Immunoprecipitation FC-Flow cytometry ChIP-Chromatin Immunoprecipitation Reactivity: H-Human R-Rat M-Mouse Mk-Monkey Dg-Dog Ch-Chicken Hm-Hamster Rb-Rabbit Sh-Sheep Pg-Pig Z-Zebrafish X-Xenopus C-Cow.