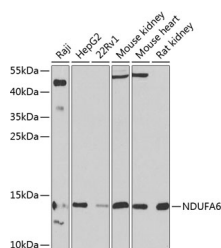


NDUFA6 Polyclonal Antibody

Catalog No.	E-AB-62141	Reactivity	H,M,R
Storage	Store at -20°C. Avoid freeze / thaw cycles.	Host	Rabbit
Applications	WB	Isotype	IgG

Note: Centrifuge before opening to ensure complete recovery of vial contents.

Images



Western blot analysis of extracts of various cell lines using NDUFA6 Polyclonal Antibody at 1:1000 dilution.

Immunogen Information

Immunogen	Recombinant fusion protein of human NDUFA6
GeneID	4700
Swissprot	P56556
Synonyms	NDUFA6,B14,CI-B14,LYRM6,NADHB14

Product Information

Calculated MW	17kDa
Observed MW	13kDa
Buffer	PBS with 0.02% sodium azide,50% glycerol,pH7.3.
Purify	Affinity purification
Dilution	WB 1:500-1:2000

Background

This gene encodes a member of the LYR family of proteins that contain a highly conserved tripeptide (LYR) motif near the N-terminus. The encoded protein is an accessory subunit of NADH: ubiquinone oxidoreductase (Complex I), which is the largest enzyme of the mitochondrial membrane respiratory chain. Complex I functions in electron transfer from NADH to the respiratory chain. [provided by RefSeq, Oct 2016]

For Research Use Only

Thank you for your recent purchase.
 If you would like to learn more about antibodies, please visit www.elabscience.com.

**Focus on your research
 Service for life science**

Applications:WB-Western Blot IHC-Immunohistochemistry IF-Immunofluorescence IP-Immunoprecipitation FC-Flow cytometry ChIP-Chromatin Immunoprecipitation Reactivity: H-Human R-Rat M-Mouse Mk-Monkey Dg-Dog Ch-Chicken Hm-Hamster Rb-Rabbit Sh-Sheep Pg-Pig Z-Zebrafish X-Xenopus C-Cow.