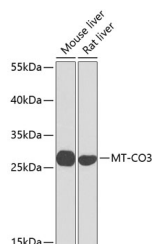


MT-CO3 Polyclonal Antibody

Catalog No.	E-AB-65644	Reactivity	M,R
Storage	Store at -20°C. Avoid freeze / thaw cycles.	Host	Rabbit
Applications	WB	Isotype	IgG

Note: Centrifuge before opening to ensure complete recovery of vial contents.

Images



Western blot analysis of extracts of various cell lines using MT-CO3 Polyclonal Antibody at dilution of 1:1000.

Immunogen Information

Immunogen	A synthetic peptide of mouse MT-CO3 (NP_904334.1).
GeneID	17710
Swissprot	P00416
Synonyms	MT-CO3,COIII,MTCO3,COX3

Product Information

Calculated MW	29kDa
Observed MW	30kDa
Buffer	PBS with 0.02% sodium azide, 50% glycerol, pH7.3.
Purify	Affinity purification
Dilution	WB 1:500-1:2000

Background

MT-CO3 (Mitochondrially Encoded Cytochrome C Oxidase III) is a Protein Coding gene. Diseases associated with MT-CO3 include Mitochondrial Complex Iv Deficiency and Mitochondrial Myopathy, Infantile, Transient. Among its related pathways are Respiratory electron transport, ATP synthesis by chemiosmotic coupling, and heat production by uncoupling proteins. and Cardiac muscle contraction. Gene Ontology (GO) annotations related to this gene include cytochrome-c oxidase activity and heme-copper terminal oxidase activity.

For Research Use Only

Thank you for your recent purchase.
If you would like to learn more about antibodies, please visit www.elabscience.com.

Focus on your research Service for life science

Applications: WB-Western Blot IHC-Immunohistochemistry IF-Immunofluorescence IP-Immunoprecipitation FC-Flow cytometry ChIP-Chromatin Immunoprecipitation Reactivity: H-Human R-Rat M-Mouse Mk-Monkey Dg-Dog Ch-Chicken Hm-Hamster Rb-Rabbit Sh-Sheep Pg-Pig Z-Zebrafish X-Xenopus C-Cow.