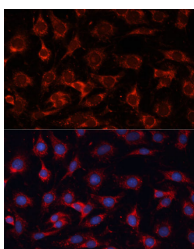


## PDHA2 Polyclonal Antibody

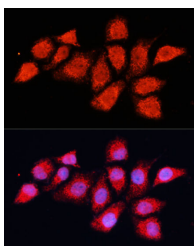
<b>Catalog No.</b>	E-AB-65645	<b>Reactivity</b>	H,M,R
<b>Storage</b>	Store at -20°C. Avoid freeze / thaw cycles.	<b>Host</b>	Rabbit
<b>Applications</b>	IF	<b>Isotype</b>	IgG

**Note:** Centrifuge before opening to ensure complete recovery of vial contents.

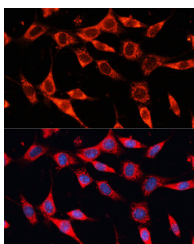
### Images



Immunofluorescence analysis of C6 cells using PDHA2 Polyclonal Antibody at dilution of 1:100 (40x lens). Blue: DAPI for nuclear staining.



Immunofluorescence analysis of HeLa cells using PDHA2 Polyclonal Antibody at dilution of 1:100 (40x lens). Blue: DAPI for nuclear staining.



Immunofluorescence analysis of NIH-3T3 cells using PDHA2 Polyclonal Antibody at dilution of 1:100 (40x lens). Blue: DAPI for nuclear staining.

### Immunogen Information

<b>Immunogen</b>	Recombinant fusion protein of human PDHA2 (NP_005381.1).
<b>GeneID</b>	5161
<b>Swissprot</b>	P29803
<b>Synonyms</b>	PDHA2,PDHAL

### Product Information

<b>Buffer</b>	PBS with 0.02% sodium azide, 50% glycerol, pH7.3.
<b>Purify</b>	Affinity purification
<b>Dilution</b>	IF 1:50-1:200

### Background

PDHA2 (Pyruvate Dehydrogenase E1 Subunit Alpha 2) is a Protein Coding gene. Diseases associated with PDHA2 include Spermatogenic Failure 1. Among its related pathways are Glucose metabolism and Citrate cycle (TCA cycle). Gene Ontology (GO) annotations related to this gene include oxidoreductase activity, acting on the aldehyde or oxo group of donors, disulfide as acceptor and pyruvate dehydrogenase (acetyl-transferring) activity. An important paralog of this gene is PDHA1.

#### For Research Use Only

Thank you for your recent purchase.  
 If you would like to learn more about antibodies, please visit [www.elabscience.com](http://www.elabscience.com).

**Focus on your research  
 Service for life science**

Applications: WB-Western Blot IHC-Immunohistochemistry IF-Immunofluorescence IP-Immunoprecipitation FC-Flow cytometry ChIP-Chromatin Immunoprecipitation Reactivity: H-Human R-Rat M-Mouse Mk-Monkey Dg-Dog Ch-Chicken Hm-Hamster Rb-Rabbit Sh-Sheep Pg-Pig Z-Zebrafish X-Xenopus C-Cow.