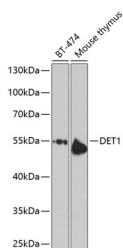


DET1 Polyclonal Antibody

Catalog No.	E-AB-65648	Reactivity	H,M,R
Storage	Store at -20°C. Avoid freeze / thaw cycles.	Host	Rabbit
Applications	WB	Isotype	IgG

Note: Centrifuge before opening to ensure complete recovery of vial contents.

Images



Western blot analysis of extracts of various cell lines using DET1 Polyclonal Antibody at dilution of 1:1000.

Immunogen Information

Immunogen	Recombinant fusion protein of human DET1 (NP_060466.2).
GeneID	55070
Swissprot	Q7L5Y6
Synonyms	DET1

Product Information

Calculated MW	63kDa/65kDa
Observed MW	55kDa
Buffer	PBS with 0.02% sodium azide, 50% glycerol, pH7.3.
Purify	Affinity purification
Dilution	WB 1:500-1:2000

Background

DET1 (DET1 Partner Of COP1 E3 Ubiquitin Ligase) is a Protein Coding gene. Diseases associated with DET1 include Hyperoxaluria, Primary, Type Ii and Hydrolethalus Syndrome 1. Among its related pathways are Innate Immune System and Class I MHC mediated antigen processing and presentation. An important paralog of this gene is ENSG00000173867.

For Research Use Only

Thank you for your recent purchase.
 If you would like to learn more about antibodies, please visit www.elabscience.com.

**Focus on your research
 Service for life science**

Applications:WB-Western Blot IHC-Immunohistochemistry IF-Immunofluorescence IP-Immunoprecipitation FC-Flow cytometry ChIP-Chromatin Immunoprecipitation Reactivity: H-Human R-Rat M-Mouse Mk-Monkey Dg-Dog Ch-Chicken Hm-Hamster Rb-Rabbit Sh-Sheep Pg-Pig Z-Zebrafish X-Xenopus C-Cow.