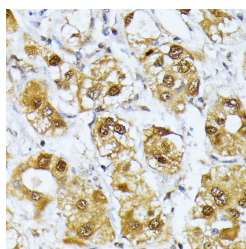


## RRAGD Polyclonal Antibody

<b>Catalog No.</b>	E-AB-63156	<b>Reactivity</b>	H,M,R
<b>Storage</b>	Store at -20°C. Avoid freeze / thaw cycles.	<b>Host</b>	Rabbit
<b>Applications</b>	IHC	<b>Isotype</b>	IgG

**Note:** Centrifuge before opening to ensure complete recovery of vial contents.

### Images



Immunohistochemistry of paraffin-embedded Human liver cancer using RRAGD Polyclonal Antibody at dilution of 1:100 (40x lens).

### Immunogen Information

<b>Immunogen</b>	Recombinant fusion protein of human RRAGD (NP_067067.1).
<b>GeneID</b>	58528
<b>Swissprot</b>	Q9NQL2
<b>Synonyms</b>	RRAGD,RAGD,bA11D8.2.1

### Product Information

<b>Buffer</b>	PBS with 0.02% sodium azide, 50% glycerol, pH7.3.
<b>Purify</b>	Affinity purification
<b>Dilution</b>	IHC 1:50-1:200

### Background

RRAGD (Ras Related GTP Binding D) is a Protein Coding gene. Diseases associated with RRAGD include Omenn Syndrome. Among its related pathways are Signaling by GPCR and RET signaling. Gene Ontology (GO) annotations related to this gene include protein heterodimerization activity and GTPase activity. An important paralog of this gene is RRAGC.

#### For Research Use Only

Thank you for your recent purchase.  
 If you would like to learn more about antibodies, please visit [www.elabscience.com](http://www.elabscience.com).

**Focus on your research  
 Service for life science**

Applications:WB-Western Blot IHC-Immunohistochemistry IF-Immunofluorescence IP-Immunoprecipitation FC-Flow cytometry ChIP-Chromatin Immunoprecipitation Reactivity: H-Human R-Rat M-Mouse Mk-Monkey Dg-Dog Ch-Chicken Hm-Hamster Rb-Rabbit Sh-Sheep Pg-Pig Z-Zebrafish X-Xenopus C-Cow.