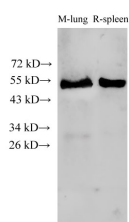


ILK Polyclonal Antibody

Catalog No.	E-AB-40173	Reactivity	M,R
Storage	Store at -20°C. Avoid freeze / thaw cycles.	Host	Rabbit
Applications	WB	Isotype	IgG

Note: Centrifuge before opening to ensure complete recovery of vial contents.

Images



Western Blot analysis of Mouse lung and Rat spleen tissue using ILK Polyclonal Antibody at dilution of 1:1000

Immunogen Information

Immunogen	Recombinant Mouse Integrin-linked protein kinase protien
Swissprot	O55222
Synonyms	DKFZp686F1765 antibody, Epididymis secretory protein Li 28, HEL S 28, ILK 1, ILK_HUMAN, ILK1, ILK2, Integrin linked kinase 2, p59, p59ILK

Product Information

Calculated MW	51 kDa
Observed MW	51-59 kDa
Buffer	PBS with 0.05% Proclin300 and 50% glycerol, pH7.4.
Purify	Affinity purification
Dilution	WB 1:1000-1:3000

Background

Integrin-linked kinase (ILK) is an ankyrin-repeat containing serine-threonine protein kinase capable of interacting with the cytoplasmic domains of integrin $\beta 1$, $\beta 2$, and $\beta 3$ subunits and whose kinase activity is modulated by cell-extracellular matrix interactions(PMID: 9539744). This protein belongs to the protein kinase superfamily. It can be autophosphorylated on serine residues.

For Research Use Only

Thank you for your recent purchase.
 If you would like to learn more about antibodies, please visit www.elabscience.com.

**Focus on your research
 Service for life science**

Applications: WB-Western Blot IHC-Immunohistochemistry IF-Immunofluorescence IP-Immunoprecipitation FC-Flow cytometry ChIP-Chromatin Immunoprecipitation Reactivity: H-Human R-Rat M-Mouse Mk-Monkey Dg-Dog Ch-Chicken Hm-Hamster Rb-Rabbit Sh-Sheep Pg-Pig Z-Zebrafish X-Xenopus C-Cow.