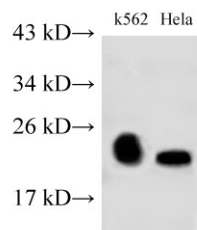


## RAB9A Polyclonal Antibody

<b>Catalog No.</b>	E-AB-40177	<b>Reactivity</b>	H,R
<b>Storage</b>	Store at -20°C. Avoid freeze / thaw cycles.	<b>Host</b>	Rabbit
<b>Applications</b>	WB	<b>Isotype</b>	IgG

**Note:** Centrifuge before opening to ensure complete recovery of vial contents.

### Images



Western Blot analysis of K562 and HeLa cells using RAB9A Polyclonal Antibody at dilution of 1:500

### Immunogen Information

<b>Immunogen</b>	Recombinant Human Ras-related protein Rab-9A protien
<b>Swissprot</b>	P51151
<b>Synonyms</b>	2410064E05Rik, AI195561, DmRab9, Rab 9, Sid6061p, Sid99, Ras related protein Rab 9A

### Product Information

<b>Calculated MW</b>	23 kDa
<b>Observed MW</b>	23 kDa
<b>Buffer</b>	PBS with 0.05% Proclin300 and 50% glycerol, pH7.4.
<b>Purify</b>	Affinity purification
<b>Dilution</b>	WB 1:500-1:1000

### Background

Ras-related protein Rab-9A is a protein that in humans is encoded by the RAB9A gene. Rab 9A is a 201 amino acid protein that localizes to the cytoplasmic side of the cell membrane, as well as to the membrane of the Golgi apparatus and the ER, and is involved in the transport of proteins between endosomes and the trans Golgi network.

#### For Research Use Only

Thank you for your recent purchase.  
 If you would like to learn more about antibodies, please visit [www.elabscience.com](http://www.elabscience.com).

**Focus on your research  
 Service for life science**

Applications: WB-Western Blot IHC-Immunohistochemistry IF-Immunofluorescence IP-Immunoprecipitation FC-Flow cytometry ChIP-Chromatin Immunoprecipitation Reactivity: H-Human R-Rat M-Mouse Mk-Monkey Dg-Dog Ch-Chicken Hm-Hamster Rb-Rabbit Sh-Sheep Pg-Pig Z-Zebrafish X-Xenopus C-Cow.