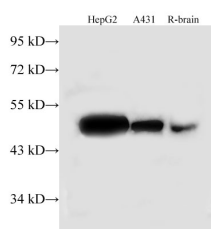


TUFM Polyclonal Antibody

| | | | |
|---------------------|---|-------------------|--------|
| Catalog No. | E-AB-40180 | Reactivity | H,R |
| Storage | Store at -20°C. Avoid freeze / thaw cycles. | Host | Rabbit |
| Applications | WB | Isotype | IgG |

Note: Centrifuge before opening to ensure complete recovery of vial contents.

Images



Western Blot analysis of HepG2, A431 cells and Rat brain using TUFM Polyclonal Antibody at dilution of 1:500

Immunogen Information

| | |
|------------------|---|
| Immunogen | Recombinant Human Elongation factor Tu, mitochondrial protein |
| Swissprot | P49411 |
| Synonyms | COXPD4, EF Tu, EF TuMT, EFTuMTP43 |

Product Information

| | |
|----------------------|--|
| Calculated MW | 50kDa |
| Observed MW | 50kDa |
| Buffer | PBS with 0.05% Proclin300 and 50% glycerol, pH7.4. |
| Purify | Affinity purification |
| Dilution | WB 1:500-1:2000 |

Background

TUFM, also named as Elongation factor Tu, mitochondrial, is a 452 amino acid protein, which contains 1 tr-type G (guanine nucleotide-binding) domain and belongs to the TRAFAC class translation factor GTPase superfamily. TUFM localizes in the Mitochondrion and promotes the GTP-dependent binding of aminoacyl-tRNA to the A-site of ribosomes during protein biosynthesis.

For Research Use Only

Thank you for your recent purchase.
 If you would like to learn more about antibodies, please visit www.elabscience.com.

**Focus on your research
 Service for life science**

Applications: WB-Western Blot IHC-Immunohistochemistry IF-Immunofluorescence IP-Immunoprecipitation FC-Flow cytometry ChIP-Chromatin Immunoprecipitation Reactivity: H-Human R-Rat M-Mouse Mk-Monkey Dg-Dog Ch-Chicken Hm-Hamster Rb-Rabbit Sh-Sheep Pg-Pig Z-Zebrafish X-Xenopus C-Cow.