

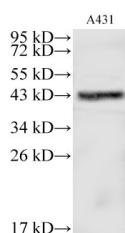
MAPK13 Polyclonal Antibody

Catalog No. E-AB-40183
Storage Store at -20°C. Avoid freeze / thaw cycles.
Applications WB,IHC

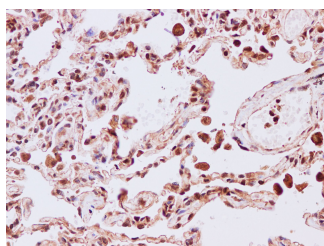
Reactivity H
Host Rabbit
Isotype IgG

Note: Centrifuge before opening to ensure complete recovery of vial contents.

Images



Western Blot analysis of A431 cells using MAPK13 Polyclonal Antibody at dilution of 1:500



Immunohistochemistry of paraffin-embedded Human lung using MAPK13 Polyclonal Antibody at dilution of 1:200

Immunogen Information

Immunogen Recombinant Human Mitogen-activated protein kinase 13 protien
Swissprot O15264
Synonyms MAP kinase 13,MAP kinase p38 delta,MAPK 13,MAPK-13,Mapk13,MGC99536,OTTHUMP00000016282,p38 delta,PRKM13,SAPK 4,Stress activated protein kinase 4

Product Information

Calculated MW 42kDa
Observed MW 42kDa-43kDa
Buffer PBS with 0.05% Proclin300 and 50% glycerol, pH7.4.
Purify Affinity purification
Dilution WB 1:500-1:2000 IHC 1:50-1:200

Background

MAPK13(Mitogen-activated protein kinase 13) is also named as PRKM13,SAPK4 and belongs to the protein kinase superfamily. MAPK13 is one of the four p38 MAPKs which play an important role in the cascades of cellular responses evoked by extracellular stimuli such as proinflammatory cytokines or physical stress leading to direct activation of transcription factors such as ELK1 and ATF2.

For Research Use Only

Thank you for your recent purchase.
If you would like to learn more about antibodies,please visit www.elabscience.com.

Focus on your research Service for life science

Applications:WB-Western Blot IHC-Immunohistochemistry IF-Immunofluorescence IP-Immunoprecipitation FC-Flow cytometry ChIP-Chromatin Immunoprecipitation Reactivity: H-Human R-Rat M-Mouse Mk-Monkey Dg-Dog Ch-Chicken Hm-Hamster Rb-Rabbit Sh-Sheep Pg-Pig Z-Zebrafish X-Xenopus C-Cow.