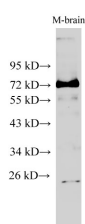


SDHA Polyclonal Antibody

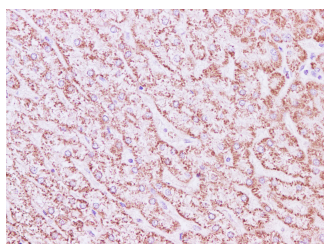
Catalog No.	E-AB-40195	Reactivity	H
Storage	Store at -20°C. Avoid freeze / thaw cycles.	Host	Rabbit
Applications	WB,IHC	Isotype	IgG

Note: Centrifuge before opening to ensure complete recovery of vial contents.

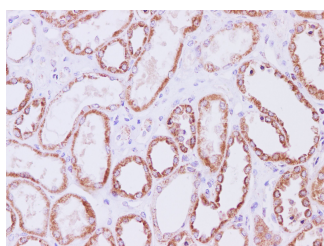
Images



Western Blot analysis of Mouse brain tissue using SDHA Polyclonal Antibody at dilution of 1:500



Immunohistochemistry of paraffin-embedded Human liver tissue using SDHA Polyclonal Antibody at dilution of 1:200



Immunohistochemistry of paraffin-embedded Human kidney tissue using SDHA Polyclonal Antibody at dilution of 1:200

Immunogen Information

Immunogen	Recombinant Human Succinate dehydrogenase [ubiquinone] flavoprotein subunit, mitochondrial protien
Swissprot	P31040
Synonyms	CMD1GG,DHSA,Flavoprotein subunit of complex II,Fp,PGL5,SDH 2,SDH1,SDHF,Succinate dehydrogenase [ubiquinone] flavoprotein subunit

Product Information

Calculated MW	72 kDa
Observed MW	72 kDa
Buffer	PBS with 0.05% Proclin300 and 50% glycerol, pH7.4.
Purify	Affinity purification
Dilution	WB 1:500-1:2000 IHC 1:50-1:200

Background

This gene encodes a major catalytic subunit of succinate-ubiquinone oxidoreductase, a complex of the mitochondrial respiratory chain. The complex is composed of four nuclear-encoded subunits and is localized in the mitochondrial inner membrane. Mutations in this gene have been associated with a form of mitochondrial respiratory chain deficiency known as Leigh Syndrome. A pseudogene has been identified on chromosome 3q29.

For Research Use Only

Thank you for your recent purchase.
 If you would like to learn more about antibodies, please visit www.elabscience.com.

Focus on your research
Service for life science

Applications:WB-Western Blot IHC-Immunohistochemistry IF-Immunofluorescence IP-Immunoprecipitation FC-Flow cytometry ChIP-Chromatin Immunoprecipitation Reactivity: H-Human R-Rat M-Mouse Mk-Monkey Dg-Dog Ch-Chicken Hm-Hamster Rb-Rabbit Sh-Sheep Pg-Pig Z-Zebrafish X-Xenopus C-Cow.