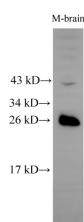


## RAB5B Polyclonal Antibody

<b>Catalog No.</b>	E-AB-40198	<b>Reactivity</b>	M
<b>Storage</b>	Store at -20°C. Avoid freeze / thaw cycles.	<b>Host</b>	Rabbit
<b>Applications</b>	WB	<b>Isotype</b>	IgG

**Note:** Centrifuge before opening to ensure complete recovery of vial contents.

### Images



Western Blot analysis of Mouse brain tissue using RAB5B Polyclonal Antibody at dilution of 1:500

### Immunogen Information

<b>Immunogen</b>	Recombinant Mouse Ras-related protein Rab-5B protein
<b>Swissprot</b>	P61021
<b>Synonyms</b>	Rab 5b, Rab5 b, RAB5B, member RAS oncogene family, Ras related protein Rab 5B, RAS-associated protein RAB5B

### Product Information

<b>Calculated MW</b>	24 kDa
<b>Observed MW</b>	25 kDa
<b>Buffer</b>	PBS with 0.05% Proclin300 and 50% glycerol, pH7.4.
<b>Purify</b>	Affinity purification
<b>Dilution</b>	WB 1:500-1:2000

### Background

RAB5B (RAB5B, Member RAS Oncogene Family) is a Protein Coding gene. Among its related pathways are Metabolism of proteins and Innate Immune System. Gene Ontology (GO) annotations related to this gene include GTP binding and GDP binding. An important paralog of this gene is RAB5C.

#### For Research Use Only

Thank you for your recent purchase.  
 If you would like to learn more about antibodies, please visit [www.elabscience.com](http://www.elabscience.com).

**Focus on your research  
 Service for life science**

Applications: WB-Western Blot IHC-Immunohistochemistry IF-Immunofluorescence IP-Immunoprecipitation FC-Flow cytometry ChIP-Chromatin Immunoprecipitation Reactivity: H-Human R-Rat M-Mouse Mk-Monkey Dg-Dog Ch-Chicken Hm-Hamster Rb-Rabbit Sh-Sheep Pg-Pig Z-Zebrafish X-Xenopus C-Cow.