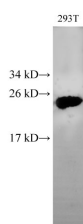


HMGB2 Polyclonal Antibody

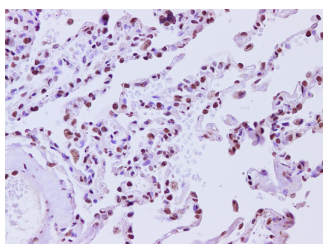
Catalog No.	E-AB-40199	Reactivity	H
Storage	Store at -20°C. Avoid freeze / thaw cycles.	Host	Rabbit
Applications	WB,IHC	Isotype	IgG

Note: Centrifuge before opening to ensure complete recovery of vial contents.

Images



Western Blot analysis of 293T cells using HMGB2 Polyclonal Antibody at dilution of 1:500



Immunohistochemistry of paraffin-embedded Human lung tissue using HMGB2 Polyclonal Antibody at dilution of 1:200

Immunogen Information

Immunogen	Recombinant Human High mobility group protein B2 protien
Swissprot	P26583
Synonyms	C80539,High mobility group (nonhistone chromosomal) protein 2,High mobility group box 2,HMG 2,HMGB2

Product Information

Calculated MW	24 kDa
Observed MW	24 kDa
Buffer	PBS with 0.05% Proclin300 and 50% glycerol, pH7.4.
Purify	Affinity purification
Dilution	WB 1:500-1:1000 IHC 1:50-1:200

Background

This gene encodes a member of the non-histone chromosomal high mobility group protein family. The proteins of this family are chromatin-associated and ubiquitously distributed in the nucleus of higher eukaryotic cells. In vitro studies have demonstrated that this protein is able to efficiently bend DNA and form DNA circles. These studies suggest a role in facilitating cooperative interactions between cis-acting proteins by promoting DNA flexibility. This protein was also reported to be involved in the final ligation step in DNA end-joining processes of DNA double-strand breaks repair and V(D)J recombination.

For Research Use Only

Thank you for your recent purchase.
 If you would like to learn more about antibodies, please visit www.elabscience.com.

**Focus on your research
 Service for life science**

Applications:WB-Western Blot IHC-Immunohistochemistry IF-Immunofluorescence IP-Immunoprecipitation FC-Flow cytometry ChIP-Chromatin Immunoprecipitation Reactivity: H-Human R-Rat M-Mouse Mk-Monkey Dg-Dog Ch-Chicken Hm-Hamster Rb-Rabbit Sh-Sheep Pg-Pig Z-Zebrafish X-Xenopus C-Cow.