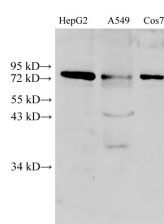


DRP1 Polyclonal Antibody

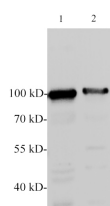
Catalog No.	E-AB-40204	Reactivity	H,M,R,Mk
Storage	Store at -20°C. Avoid freeze / thaw cycles.	Host	Rabbit
Applications	WB	Isotype	IgG

Note: Centrifuge before opening to ensure complete recovery of vial contents.

Images



Western Blot analysis of HepG2, A549 and Cos7 cells using DRP1 Polyclonal Antibody at dilution of 1:500



Western blotting with anti-DRP1 polyclonal Antibody at dilution of 1:1000. Lane 1: Mouse brain lysates, lane 2: Rat brain lysate.

Immunogen Information

Immunogen	Recombinant Human Dynamin-1-like protein
Swissprot	O00429
Synonyms	DLP1, DNM1L, DNM1L,DLP1,DRP1, DVLP, DYMPLE, dynamin 1 like,Dynamin like protein 4, Dynamin like protein IV, DYNIV 11, HDYNIV, VPS1

Product Information

Calculated MW	81kDa
Observed MW	81kDa
Buffer	PBS with 0.05% Proclin300 and 50% glycerol, pH7.4.
Purify	Antigen Affinity Purification
Dilution	WB: 1:500-2000

Background

This gene encodes a member of the dynamin superfamily of GTPases. The encoded protein mediates mitochondrial and peroxisomal division, and is involved in developmentally regulated apoptosis and programmed necrosis. Dysfunction of this gene is implicated in several neurological disorders, including Alzheimer's disease. Mutations in this gene are associated with the autosomal dominant disorder, encephalopathy, lethal, due to defective mitochondrial and peroxisomal fission (EMPF). Alternative splicing results in multiple transcript variants encoding different isoforms.

For Research Use Only

Thank you for your recent purchase.
 If you would like to learn more about antibodies, please visit www.elabscience.com.

**Focus on your research
 Service for life science**

Applications:WB-Western Blot IHC-Immunohistochemistry IF-Immunofluorescence IP-Immunoprecipitation FC-Flow cytometry ChIP-Chromatin Immunoprecipitation Reactivity: H-Human R-Rat M-Mouse Mk-Monkey Dg-Dog Ch-Chicken Hm-Hamster Rb-Rabbit Sh-Sheep Pg-Pig Z-Zebrafish X-Xenopus C-Cow.