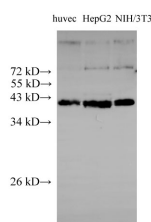


PTX3 Polyclonal Antibody

| | | | |
|---------------------|---|-------------------|--------|
| Catalog No. | E-AB-40206 | Reactivity | H,M |
| Storage | Store at -20°C. Avoid freeze / thaw cycles. | Host | Rabbit |
| Applications | WB | Isotype | IgG |

Note: Centrifuge before opening to ensure complete recovery of vial contents.

Images



Western Blot analysis of huvec, k562 and NIH/3T3 using PTX3 Polyclonal Antibody at dilution of 1:1000

Immunogen Information

| | |
|------------------|---|
| Immunogen | Recombinant Human Pentraxin-related protein PTX3 protein |
| Swissprot | P26022 |
| Synonyms | Pentaxin related protein PTX3, Pentraxin 3, Pentraxin related protein PTX3, PTX3, TNF alpha induced protein 5, TNFAIP5, TSG 14, TSG14 |

Product Information

| | |
|----------------------|--|
| Calculated MW | 42 kDa |
| Observed MW | 42 kDa |
| Buffer | PBS with 0.05% Proclin300 and 50% glycerol, pH7.4. |
| Purify | Affinity purification |
| Dilution | WB 1:500-1:2000 |

Background

Ptx3, also known as tumor necrosis factor-stimulated gene sequence-14 (TSG14), is a secreted pattern-recognition receptor that has a non-redundant role in resistance to selected microbial agents. Ptx3 belongs to the family of “long pentraxins”, which have C-terminal pentraxin domains and novel amino-terminal domains. Ptx3 binds selected pathogens, including *Aspergillus fumigatus*, *Pseudomonas aeruginosa* and *Salmonella typhimurium*. It is synthesized in IgA glomerulonephritis and activates mesangial cells.

For Research Use Only

Thank you for your recent purchase.
 If you would like to learn more about antibodies, please visit www.elabscience.com.

**Focus on your research
 Service for life science**

Applications:WB-Western Blot IHC-Immunohistochemistry IF-Immunofluorescence IP-Immunoprecipitation FC-Flow cytometry ChIP-Chromatin Immunoprecipitation Reactivity: H-Human R-Rat M-Mouse Mk-Monkey Dg-Dog Ch-Chicken Hm-Hamster Rb-Rabbit Sh-Sheep Pg-Pig Z-Zebrafish X-Xenopus C-Cow.