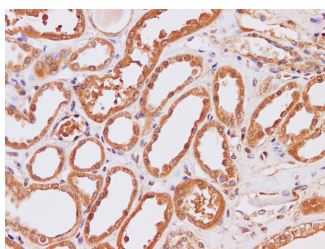


IP3KB Polyclonal Antibody

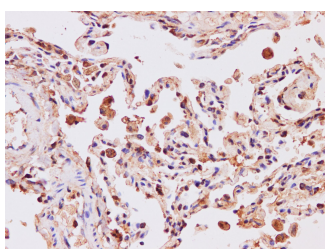
Catalog No.	E-AB-40215	Reactivity	H
Storage	Store at -20°C. Avoid freeze / thaw cycles.	Host	Rabbit
Applications	IHC	Isotype	IgG

Note: Centrifuge before opening to ensure complete recovery of vial contents.

Images



Immunohistochemistry of paraffin-embedded Human kidney using ITPKB Polyclonal Antibody at dilution of 1:200



Immunohistochemistry of paraffin-embedded Human lung using ITPKB Polyclonal Antibody at dilution of 1:200

Immunogen Information

Immunogen	Recombinant Human Inositol-trisphosphate 3-kinase B protien
Swissprot	P27987
Synonyms	5-trisphosphate 3-kinase B, Inositol 1, Inositol trisphosphate 3 kinase B, InsP 3-kinase B, IP3 3 kinase, IP3K, IP3K B, IP3KB, Itpkb

Product Information

Buffer	PBS with 0.05% Proclin300 and 50% glycerol, pH7.4.
Purify	Affinity purification
Dilution	IHC 1:100-1:400

Background

The protein encoded by this protein regulates inositol phosphate metabolism by phosphorylation of second messenger inositol 1,4,5-trisphosphate to Ins(1,3,4,5)P4. The activity of this encoded protein is responsible for regulating the levels of a large number of inositol polyphosphates that are important in cellular signaling. Both calcium/calmodulin and protein phosphorylation mechanisms control its activity.

For Research Use Only

Thank you for your recent purchase.
 If you would like to learn more about antibodies, please visit www.elabscience.com.

**Focus on your research
 Service for life science**

Applications: WB-Western Blot IHC-Immunohistochemistry IF-Immunofluorescence IP-Immunoprecipitation FC-Flow cytometry ChIP-Chromatin Immunoprecipitation Reactivity: H-Human R-Rat M-Mouse Mk-Monkey Dg-Dog Ch-Chicken Hm-Hamster Rb-Rabbit Sh-Sheep Pg-Pig Z-Zebrafish X-Xenopus C-Cow.