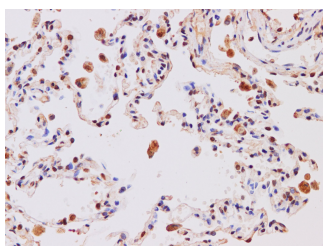


IL27 Polyclonal Antibody

Catalog No.	E-AB-40216	Reactivity	H
Storage	Store at -20°C. Avoid freeze / thaw cycles.	Host	Rabbit
Applications	IHC	Isotype	IgG

Note: Centrifuge before opening to ensure complete recovery of vial contents.

Images



Immunohistochemistry of paraffin-embedded Human lung using IL27 Polyclonal Antibody at dilution of 1:200

Immunogen Information

Immunogen	Recombinant Human Interleukin-27 subunit alpha protien
Swissprot	Q8NEV9
Synonyms	EBI3,IL 27,IL 27 p28 subunit,IL 27A,IL 30,IL-27 subunit alpha,IL-27-A,IL27,IL27-A,IL27A,IL27A,IL27p28,IL30,

Product Information

Buffer	PBS with 0.05% Proclin300 and 50% glycerol, pH7.4.
Purify	Affinity purification
Dilution	IHC 1:100-1:400

Background

IL-27, a member of IL-12/IL-23 heterodimeric family of cytokines, has pleiotropic properties that can enhance or limit immune responses. IL-27 is a heterodimeric cytokine composed of two subunits: IL-27a and IL-27b. IL-27 acts on various cell types, including T cells, B cells, macrophages, dendritic cells, natural killer (NK) cells and non-hematopoietic cells. IL-27 plays a critical role in the early regulation of T helper type 1 initiation, and enhances proliferation of naive CD4+T cells and naive B cells. It, however, also exerts anti-inflammatory functions by inhibiting the development of Th17 cells and inducing IL-10 producing type 1 regulatory T cells. IL-27 is a potentially promising cytokine for therapeutic approaches on various human diseases.

For Research Use Only

Thank you for your recent purchase.
 If you would like to learn more about antibodies, please visit www.elabscience.com.

**Focus on your research
 Service for life science**

Applications: WB-Western Blot IHC-Immunohistochemistry IF-Immunofluorescence IP-Immunoprecipitation FC-Flow cytometry ChIP-Chromatin Immunoprecipitation Reactivity: H-Human R-Rat M-Mouse Mk-Monkey Dg-Dog Ch-Chicken Hm-Hamster Rb-Rabbit Sh-Sheep Pg-Pig Z-Zebrafish X-Xenopus C-Cow.