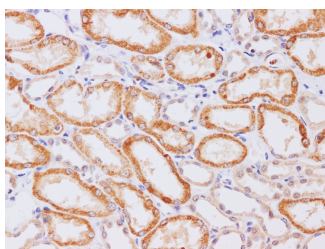


MMP3 Polyclonal Antibody

Catalog No.	E-AB-40220	Reactivity	H
Storage	Store at -20°C. Avoid freeze / thaw cycles.	Host	Rabbit
Applications	IHC	Isotype	IgG

Note: Centrifuge before opening to ensure complete recovery of vial contents.

Images



Immunohistochemistry of paraffin-embedded Human kidney using MMP3 Polyclonal Antibody at dilution of 1:200

Immunogen Information

Immunogen	Recombinant Human Stromelysin-1 protien
Swissprot	P08254
Synonyms	CHDS6,Matrix metalloproteinase 3,MGC126102,MGC126103,MGC126104,MMP3,Proteoglycanase,SL-1,SL1,STMY,STMY1,STR1,Stromelysin 1,Stromelysin-1,Transin 1

Product Information

Buffer	PBS with 0.05% Proclin300 and 50% glycerol, pH7.4.
Purify	Affinity purification
Dilution	IHC 1:100-1:400

Background

Proteins of the matrix metalloproteinase (MMP) family are involved in the breakdown of extracellular matrix in normal physiological processes, such as embryonic development, reproduction, and tissue remodeling, as well as in disease processes, such as arthritis and metastasis. Most MMP's are secreted as inactive proproteins which are activated when cleaved by extracellular proteinases. This gene encodes an enzyme which degrades fibronectin, laminin, collagens III, IV, IX, and X, and cartilage proteoglycans. The enzyme is thought to be involved in wound repair, progression of atherosclerosis, and tumor initiation. The gene is part of a cluster of MMP genes which localize to chromosome 11q22.3.

For Research Use Only

Thank you for your recent purchase.
 If you would like to learn more about antibodies, please visit www.elabscience.com.

**Focus on your research
 Service for life science**

Applications: WB-Western Blot IHC-Immunohistochemistry IF-Immunofluorescence IP-Immunoprecipitation FC-Flow cytometry ChIP-Chromatin Immunoprecipitation Reactivity: H-Human R-Rat M-Mouse Mk-Monkey Dg-Dog Ch-Chicken Hm-Hamster Rb-Rabbit Sh-Sheep Pg-Pig Z-Zebrafish X-Xenopus C-Cow.