

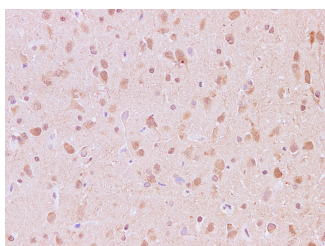
## JNK2 Polyclonal Antibody

**Catalog No.** E-AB-40228  
**Storage** Store at -20°C. Avoid freeze / thaw cycles.  
**Applications** IHC

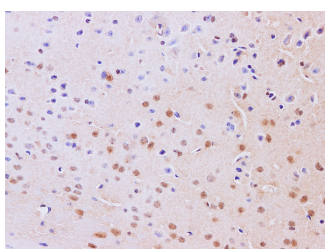
**Reactivity** M,R  
**Host** Rabbit  
**Isotype** IgG

**Note:** Centrifuge before opening to ensure complete recovery of vial contents.

### Images



Immunohistochemistry of paraffin-embedded Rat brain using JNK2 Polyclonal Antibody at dilution of 1:200



Immunohistochemistry of paraffin-embedded Mouse brain using JNK2 Polyclonal Antibody at dilution of 1:200

### Immunogen Information

**Immunogen** Recombinant Rat Mitogen-activated protein kinase 9 protien  
**Swissprot** P49186  
**Synonyms** c Jun kinase 2,JNK 55,JNK2 alpha,JNK2,JNK2A,JNK 2alpha,JNK2B,JNK2BETA,Jun kinase, MAP kinase 9,MAPK 9,MK09,P54a,p54aSAPK,PRKM9

### Product Information

**Buffer** PBS with 0.05% Proclin300 and 50% glycerol, pH7.4.  
**Purify** Affinity purification  
**Dilution** IHC 1:50-1:200

### Background

The protein encoded by this gene is a member of the MAP kinase family. MAP kinases act as an integration point for multiple biochemical signals, and are involved in a wide variety of cellular processes such as proliferation, differentiation, transcription regulation and development. This kinase targets specific transcription factors, and thus mediates immediate-early gene expression in response to various cell stimuli. It is most closely related to MAPK8, both of which are involved in UV radiation induced apoptosis, thought to be related to the cytochrome c-mediated cell death pathway. This gene and MAPK8 are also known as c-Jun N-terminal kinases. This kinase blocks the ubiquitination of tumor suppressor p53, and thus it increases the stability of p53 in nonstressed cells. Studies of this gene's mouse counterpart suggest a key role in T-cell differentiation. Several alternatively spliced transcript variants encoding distinct isoforms have been reported.

### For Research Use Only

Thank you for your recent purchase.  
If you would like to learn more about antibodies, please visit [www.elabscience.com](http://www.elabscience.com).

### Focus on your research Service for life science

Applications:WB-Western Blot IHC-Immunohistochemistry IF-Immunofluorescence IP-Immunoprecipitation FC-Flow cytometry ChIP-Chromatin Immunoprecipitation Reactivity: H-Human R-Rat M-Mouse Mk-Monkey Dg-Dog Ch-Chicken Hm-Hamster Rb-Rabbit Sh-Sheep Pg-Pig Z-Zebrafish X-Xenopus C-Cow.