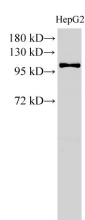


## MCM3 Polyclonal Antibody

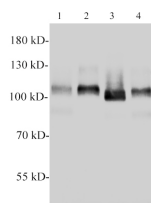
<b>Catalog No.</b>	E-AB-40230	<b>Reactivity</b>	H,M,R
<b>Storage</b>	Store at -20°C. Avoid freeze / thaw cycles.	<b>Host</b>	Rabbit
<b>Applications</b>	WB,IHC	<b>Isotype</b>	IgG

**Note:** Centrifuge before opening to ensure complete recovery of vial contents.

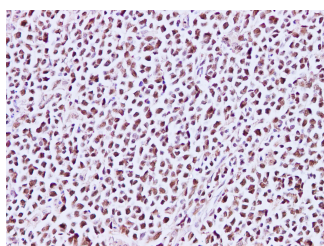
### Images



Western Blot analysis of HepG2 cell using MCM3 Polyclonal Antibody at dilution of 1:500



Western blotting with anti-MCM3 polyclonal antibody at dilution of 1:1000. Lane 1:PC-12 cell lysate,Lane 2:C6 cell lysate,lane 3:Raw264.7 cell lysate,lane 4:NIH/3T3 cell lysate.



Immunohistochemistry of paraffin-embedded Human lymph node using MCM3 Polyclonal Antibody at dilution of 1:200

### Immunogen Information

<b>Immunogen</b>	Recombinant Human DNA replication licensing factor MCM3 protein
<b>GeneID</b>	4172
<b>Swissprot</b>	P25205
<b>Synonyms</b>	HCC5,MCM 3,mcm3,MCM3,P1 h,P1 MCM3,P1 Protein,P1-MCM3,p102,RLF beta subunit,RLFB

### Product Information

<b>Calculated MW</b>	91,96 kDa
<b>Observed MW</b>	100 kDa
<b>Buffer</b>	PBS with 0.05% Proclin300, 50% glycerol, pH7.3.
<b>Purify</b>	Antigen Affinity Purification
<b>Dilution</b>	WB 1:500-1:1000 IHC 1:50-1:200

### Background

The protein encoded by this gene is one of the highly conserved mini-chromosome maintenance proteins (MCM) that are involved in the initiation of eukaryotic genome replication. The hexameric protein complex formed by MCM proteins is a key component of the pre-replication complex (pre\_RC) and may be involved in the formation of replication forks and in the recruitment of other DNA replication related proteins. This protein is a subunit of the protein complex that consists of MCM2-7. It has been shown to interact directly with mCM5/CDC46. This protein also interacts with and is acetylated by MCM3AP, a chromatin-associated acetyltransferase. The acetylation of this protein inhibits the initiation of DNA replication and cell cycle progression. Two transcript variants encoding different isoforms have been found for this gene.

### For Research Use Only

Thank you for your recent purchase.  
 If you would like to learn more about antibodies, please visit [www.elabscience.com](http://www.elabscience.com).

**Focus on your research  
 Service for life science**

Applications:WB-Western Blot IHC-Immunohistochemistry IF-Immunofluorescence IP-Immunoprecipitation FC-Flow cytometry ChIP-Chromatin Immunoprecipitation Reactivity: H-Human R-Rat M-Mouse Mk-Monkey Dg-Dog Ch-Chicken Hm-Hamster Rb-Rabbit Sh-Sheep Pg-Pig Z-Zebrafish X-Xenopus C-Cow.