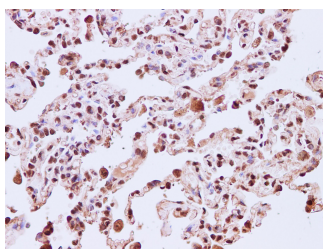


## CDC46 Polyclonal Antibody

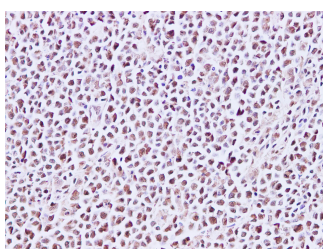
<b>Catalog No.</b>	E-AB-40234	<b>Reactivity</b>	H
<b>Storage</b>	Store at -20°C. Avoid freeze / thaw cycles.	<b>Host</b>	Rabbit
<b>Applications</b>	IHC	<b>Isotype</b>	IgG

**Note:** Centrifuge before opening to ensure complete recovery of vial contents.

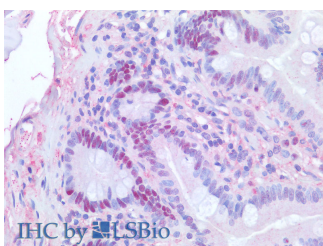
### Images



Immunohistochemistry of paraffin-embedded Human lung using CDC46 Polyclonal Antibody at dilution of 1:200



Immunohistochemistry of paraffin-embedded Human lymph node using CDC46 Polyclonal Antibody at dilution of 1:200



Immunohistochemistry of paraffin-embedded Human small intestine using CDC46 Polyclonal Antibody at dilution of 1:200(Elabscience® Product Detected by Lifespan).

### Immunogen Information

<b>Immunogen</b>	Recombinant Human DNA replication licensing factor MCM5 protien
<b>Swissprot</b>	P33992
<b>Synonyms</b>	CDC 46,CDC46,CDC46 homolog,Cell division cycle 46,MCM 5,MGC5315,Minichromosome maintenance complex component 5 ,P1 CDC46

### Product Information

<b>Buffer</b>	PBS with 0.05% Proclin300 and 50% glycerol, pH7.4.
<b>Purify</b>	Affinity purification
<b>Dilution</b>	IHC 1:50-1:200

### Background

The protein encoded by this gene is structurally very similar to the CDC46 protein from *S. cerevisiae*, a protein involved in the initiation of DNA replication. The encoded protein is a member of the MCM family of chromatin-binding proteins and can interact with at least two other members of this family. The encoded protein is upregulated in the transition from the G<sub>0</sub> to G<sub>1</sub>/S phase of the cell cycle and may actively participate in cell cycle regulation.

#### For Research Use Only

Thank you for your recent purchase.  
 If you would like to learn more about antibodies, please visit [www.elabscience.com](http://www.elabscience.com).

**Focus on your research  
 Service for life science**

Applications:WB-Western Blot IHC-Immunohistochemistry IF-Immunofluorescence IP-Immunoprecipitation FC-Flow cytometry ChIP-Chromatin Immunoprecipitation Reactivity: H-Human R-Rat M-Mouse Mk-Monkey Dg-Dog Ch-Chicken Hm-Hamster Rb-Rabbit Sh-Sheep Pg-Pig Z-Zebrafish X-Xenopus C-Cow.