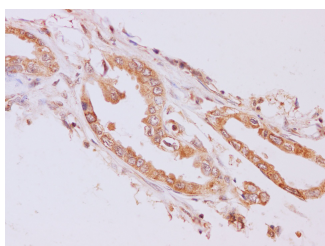


RAB5A Polyclonal Antibody

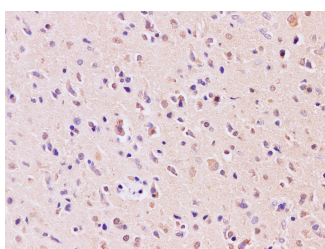
Catalog No.	E-AB-40241	Reactivity	H
Storage	Store at -20°C. Avoid freeze / thaw cycles.	Host	Rabbit
Applications	IHC	Isotype	IgG

Note: Centrifuge before opening to ensure complete recovery of vial contents.

Images



Immunohistochemistry of paraffin-embedded Human pancreas cancer using RAB5A Polyclonal Antibody at dilution of 1:200



Immunohistochemistry of paraffin-embedded human gliomas using RAB5A Polyclonal Antibody at dilution of 1:200

Immunogen Information

Immunogen	Recombinant Human Ras-related protein Rab-5A protien
Swissprot	P20339
Synonyms	RAB 5,RAB 5A,RAB5A,RAB5A member RAS oncogene family,RAS associated protein RAB5A,Ras related protein Rab 5A

Product Information

Buffer	PBS with 0.05% Proclin300 and 50% glycerol, pH7.4.
Purify	Affinity purification
Dilution	IHC 1:50-1:200

Background

Rab5a belongs to the Rab GTPases family proteins, which play roles in endocytosis, exocytosis, and vesicular transportation. Rab family proteins were recently reported to play important roles in human cancer progression. Rab5a was reported to be overexpressed in breast and ovarian cancers and associated with proliferation and invasion.

For Research Use Only

Thank you for your recent purchase.
 If you would like to learn more about antibodies, please visit www.elabscience.com.

**Focus on your research
 Service for life science**

Applications: WB-Western Blot IHC-Immunohistochemistry IF-Immunofluorescence IP-Immunoprecipitation FC-Flow cytometry ChIP-Chromatin Immunoprecipitation Reactivity: H-Human R-Rat M-Mouse Mk-Monkey Dg-Dog Ch-Chicken Hm-Hamster Rb-Rabbit Sh-Sheep Pg-Pig Z-Zebrafish X-Xenopus C-Cow.