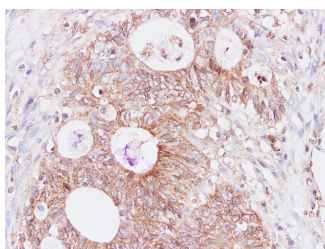


SNAP23 Polyclonal Antibody

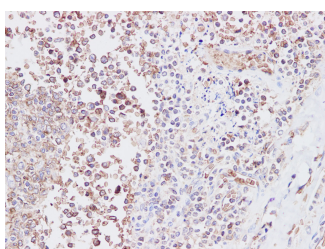
Catalog No.	E-AB-40243	Reactivity	H
Storage	Store at -20°C. Avoid freeze / thaw cycles.	Host	Rabbit
Applications	IHC	Isotype	IgG

Note: Centrifuge before opening to ensure complete recovery of vial contents.

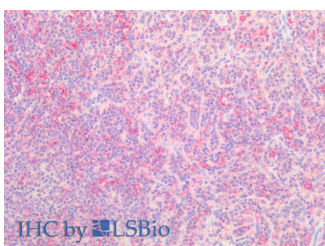
Images



Immunohistochemistry of paraffin-embedded Human colon using SNAP23 Polyclonal Antibody at dilution of 1:200



Immunohistochemistry of paraffin-embedded human tonsil using SNAP23 Polyclonal Antibody at dilution of 1:200



Immunohistochemistry of paraffin-embedded Human spleen using SNAP23 Polyclonal Antibody at dilution of 1:200 (Elabscience® Product Detected by Lifespan).

Immunogen Information

Immunogen	Recombinant Human Synaptosomal-associated protein 23 protien
Swissprot	O00161
Synonyms	HsT17016,LS-B8340,SNAP23,SNAP-23,SNAP23A,SNAP23B,Synaptosomal associated protein 23,Vesicle membrane fusion protein SNAP 23

Product Information

Buffer	PBS with 0.05% Proclin300 and 50% glycerol, pH7.4.
Purify	Affinity purification
Dilution	IHC 1:50-1:200

Background

Specificity of vesicular transport is regulated, in part, by the interaction of a vesicle-associated membrane protein termed synaptobrevin/VAMP with a target compartment membrane protein termed syntaxin. These proteins, together with SNAP25 (synaptosome-associated protein of 25 kDa), form a complex which serves as a binding site for the general membrane fusion machinery.

For Research Use Only

Thank you for your recent purchase.
 If you would like to learn more about antibodies, please visit www.elabscience.com.

**Focus on your research
 Service for life science**

Applications: WB-Western Blot IHC-Immunohistochemistry IF-Immunofluorescence IP-Immunoprecipitation FC-Flow cytometry ChIP-Chromatin Immunoprecipitation Reactivity: H-Human R-Rat M-Mouse Mk-Monkey Dg-Dog Ch-Chicken Hm-Hamster Rb-Rabbit Sh-Sheep Pg-Pig Z-Zebrafish X-Xenopus C-Cow.