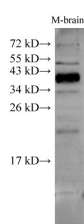


ATXN3 Polyclonal Antibody

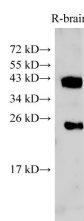
| | | | |
|---------------------|---|-------------------|--------|
| Catalog No. | E-AB-40246 | Reactivity | H,M,R |
| Storage | Store at -20°C. Avoid freeze / thaw cycles. | Host | Rabbit |
| Applications | WB,IHC | Isotype | IgG |

Note: Centrifuge before opening to ensure complete recovery of vial contents.

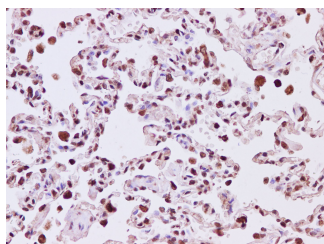
Images



Western Blot analysis of Mouse brain tissue using ATXN3 Polyclonal Antibody at dilution of 1:500



Western Blot analysis of Rat brain tissue using ATXN3 Polyclonal Antibody at dilution of 1:500



Immunohistochemistry of paraffin-embedded Human lung tissue using ATXN3 Polyclonal Antibody at dilution of 1:200

Immunogen Information

| | |
|------------------|---|
| Immunogen | Recombinant Human Ataxin-3 protien |
| Swissprot | P54252 |
| Synonyms | AT3,Ataxin 3,ataxin 3 variant h,ataxin 3 variant m,ataxin 3 variant ref,ATX3,EC 3.4.22,JOS,Machado Joseph disease,MJD, OTTHUMP00000221583,Rsca3 |

Product Information

| | |
|----------------------|--|
| Calculated MW | 41kDa |
| Observed MW | 41kDa,22kDa |
| Buffer | PBS with 0.05% Proclin300 and 50% glycerol, pH7.4. |
| Purify | Affinity purification |
| Dilution | WB 1:500-1:2000 IHC 1:50-1:200 |

Background

Machado-Joseph disease, also known as spinocerebellar ataxia-3, is an autosomal dominant neurologic disorder. The protein encoded by this gene contains (CAG)*n* repeats in the coding region, and the expansion of these repeats from the normal 12-44 to 52-86 is one cause of Machado-Joseph disease. There is a negative correlation between the age of onset and CAG repeat numbers. Alternatively spliced transcript variants encoding different isoforms have been described for this gene.

For Research Use Only

Thank you for your recent purchase.
 If you would like to learn more about antibodies, please visit www.elabscience.com.

**Focus on your research
 Service for life science**

Applications:WB-Western Blot IHC-Immunohistochemistry IF-Immunofluorescence IP-Immunoprecipitation FC-Flow cytometry ChIP-Chromatin Immunoprecipitation Reactivity: H-Human R-Rat M-Mouse Mk-Monkey Dg-Dog Ch-Chicken Hm-Hamster Rb-Rabbit Sh-Sheep Pg-Pig Z-Zebrafish X-Xenopus C-Cow.