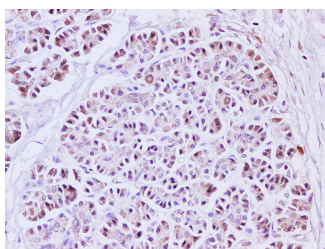


## IL1A Polyclonal Antibody

<b>Catalog No.</b>	E-AB-40248	<b>Reactivity</b>	H
<b>Storage</b>	Store at -20°C. Avoid freeze / thaw cycles.	<b>Host</b>	Rabbit
<b>Applications</b>	IHC	<b>Isotype</b>	IgG

**Note:** Centrifuge before opening to ensure complete recovery of vial contents.

### Images



Immunohistochemistry of paraffin-embedded Human pancreas tissue using IL1A Polyclonal Antibody at dilution of 1:200

### Immunogen Information

<b>Immunogen</b>	Recombinant Human Interleukin-1 alpha protien
<b>Swissprot</b>	P01583
<b>Synonyms</b>	BAF,Hematopoietin 1,Hematopoietin-1,IL 1 alpha,IL 1A,IL1F1,Interleukin 1 alpha,LAF,LEM,Preinterleukin 1 alpha,Pro interleukin 1 alpha

### Product Information

<b>Buffer</b>	PBS with 0.05% Proclin300 and 50% glycerol, pH7.4.
<b>Purify</b>	Affinity purification
<b>Dilution</b>	IHC 1:50-1:200

### Background

The protein encoded by this gene is a member of the interleukin 1 cytokine family. This cytokine is a pleiotropic cytokine involved in various immune responses, inflammatory processes, and hematopoiesis. This cytokine is produced by monocytes and macrophages as a proprotein, which is proteolytically processed and released in response to cell injury, and thus induces apoptosis. This gene and eight other interleukin 1 family genes form a cytokine gene cluster on chromosome 2. It has been suggested that the polymorphism of these genes is associated with rheumatoid arthritis and Alzheimer's disease

#### For Research Use Only

Thank you for your recent purchase.  
 If you would like to learn more about antibodies, please visit [www.elabscience.com](http://www.elabscience.com).

**Focus on your research  
 Service for life science**

Applications:WB-Western Blot IHC-Immunohistochemistry IF-Immunofluorescence IP-Immunoprecipitation FC-Flow cytometry ChIP-Chromatin Immunoprecipitation Reactivity: H-Human R-Rat M-Mouse Mk-Monkey Dg-Dog Ch-Chicken Hm-Hamster Rb-Rabbit Sh-Sheep Pg-Pig Z-Zebrafish X-Xenopus C-Cow.