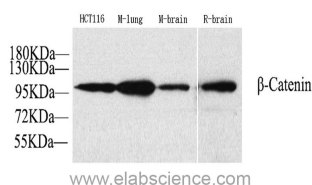


Catenin beta Polyclonal Antibody

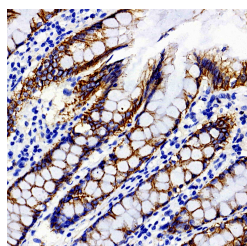
| | | | |
|---------------------|---|-------------------|--------|
| Catalog No. | E-AB-70005 | Reactivity | H,M,R |
| Storage | Store at -20°C. Avoid freeze / thaw cycles. | Host | Rabbit |
| Applications | WB,IHC,IF | Isotype | IgG |

Note: Centrifuge before opening to ensure complete recovery of vial contents.

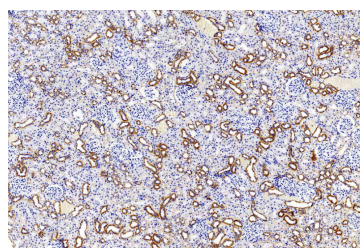
Images



Western Blot analysis of various samples using Catenin beta Polyclonal Antibody at dilution of 1:1000.



Immunohistochemistry analysis of paraffin-embedded Human colon tissue using Catenin beta Polyclonal Antibody at dilution of 1:300.



Immunohistochemistry analysis of paraffin-embedded Mouse kidney tissue using Catenin beta Polyclonal Antibody at dilution of 1:500.

Immunogen Information

| | |
|------------------|--|
| Immunogen | KLH conjugated Synthetic peptide corresponding to Mouse β -catenin |
| Swissprot | P35222,Q02248,Q9WU82 |
| Synonyms | CTNNB1, CTNNB, MRD19, armadillo, catenin beta 1 |

Product Information

| | |
|----------------------|--|
| Calculated MW | 92kDa |
| Observed MW | 92kDa |
| Buffer | PBS with 0.02% sodium azide, 1% protective protein and 50% glycerol, pH7.4 |
| Purify | Affinity purification |
| Dilution | WB 1:500-1:2000, IHC 1:300-1:1000, IF 1:200-1:800 |

Background

CTNNB1, also known as β -Catenin, is an evolutionarily conserved, multifunctional intracellular protein. CTNNB1 was originally identified in cell adhesion junctions (AJs) where it functions to bridge the cytoplasmic domain of cadherins to α -catenin and the actin cytoskeleton. Besides its essential role in the AJs, CTNNB1 is also a key downstream component of the canonical Wnt pathway that plays diverse and critical roles in embryonic development and adult tissue homeostasis. Deregulation of CTNNB1 activity is associated with multiple diseases including cancers.

For Research Use Only

Thank you for your recent purchase.
 If you would like to learn more about antibodies, please visit www.elabscience.com.

**Focus on your research
 Service for life science**

Applications: WB-Western Blot IHC-Immunohistochemistry IF-Immunofluorescence IP-Immunoprecipitation FC-Flow cytometry ChIP-Chromatin Immunoprecipitation Reactivity: H-Human R-Rat M-Mouse Mk-Monkey Dg-Dog Ch-Chicken Hm-Hamster Rb-Rabbit Sh-Sheep Pg-Pig Z-Zebrafish X-Xenopus C-Cow.