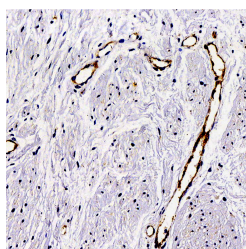


## VWF Polyclonal Antibody

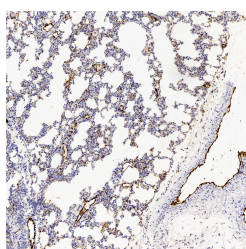
<b>Catalog No.</b>	E-AB-70006	<b>Reactivity</b>	H,R
<b>Storage</b>	Store at -20°C. Avoid freeze / thaw cycles.	<b>Host</b>	Rabbit
<b>Applications</b>	IHC	<b>Isotype</b>	IgG

**Note:** Centrifuge before opening to ensure complete recovery of vial contents.

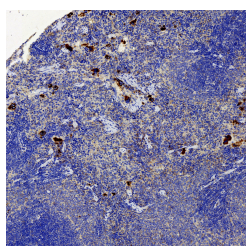
### Images



Immunohistochemistry analysis of paraffin-embedded Human hysteryomyoma using VWF Polyclonal Antibody at dilution of 1:300.



Immunohistochemistry analysis of paraffin-embedded Rat lung using VWF Polyclonal Antibody at dilution of 1:500.



Immunohistochemistry analysis of paraffin-embedded Rat spleen using VWF Polyclonal Antibody at dilution of 1:500.

### Immunogen Information

<b>Immunogen</b>	KLH conjugated Synthetic peptide corresponding to Mouse VWF
<b>Swissprot</b>	P04275,Q8CIZ8,Q62935
<b>Synonyms</b>	Synonyms F8VWF,Coagulation Factor VIII VWF ,VWD ,VWF

### Product Information

<b>Buffer</b>	PBS with 0.02% sodium azide, 1% protective protein and 50% glycerol, pH7.4
<b>Purify</b>	Affinity purification
<b>Dilution</b>	IHC 1:200-1:800

### Background

The glycoprotein encoded by this gene functions as both an antihemophilic factor carrier and a platelet-vessel wall mediator in the blood coagulation system. It is crucial to the hemostasis process. Mutations in this gene or deficiencies in this protein result in von Willebrand's disease. An unprocessed pseudogene has been found on chromosome 22.

#### For Research Use Only

Thank you for your recent purchase.  
 If you would like to learn more about antibodies, please visit [www.elabscience.com](http://www.elabscience.com).

**Focus on your research  
 Service for life science**

Applications:WB-Western Blot IHC-Immunohistochemistry IF-Immunofluorescence IP-Immunoprecipitation FC-Flow cytometry ChIP-Chromatin Immunoprecipitation Reactivity: H-Human R-Rat M-Mouse Mk-Monkey Dg-Dog Ch-Chicken Hm-Hamster Rb-Rabbit Sh-Sheep Pg-Pig Z-Zebrafish X-Xenopus C-Cow.